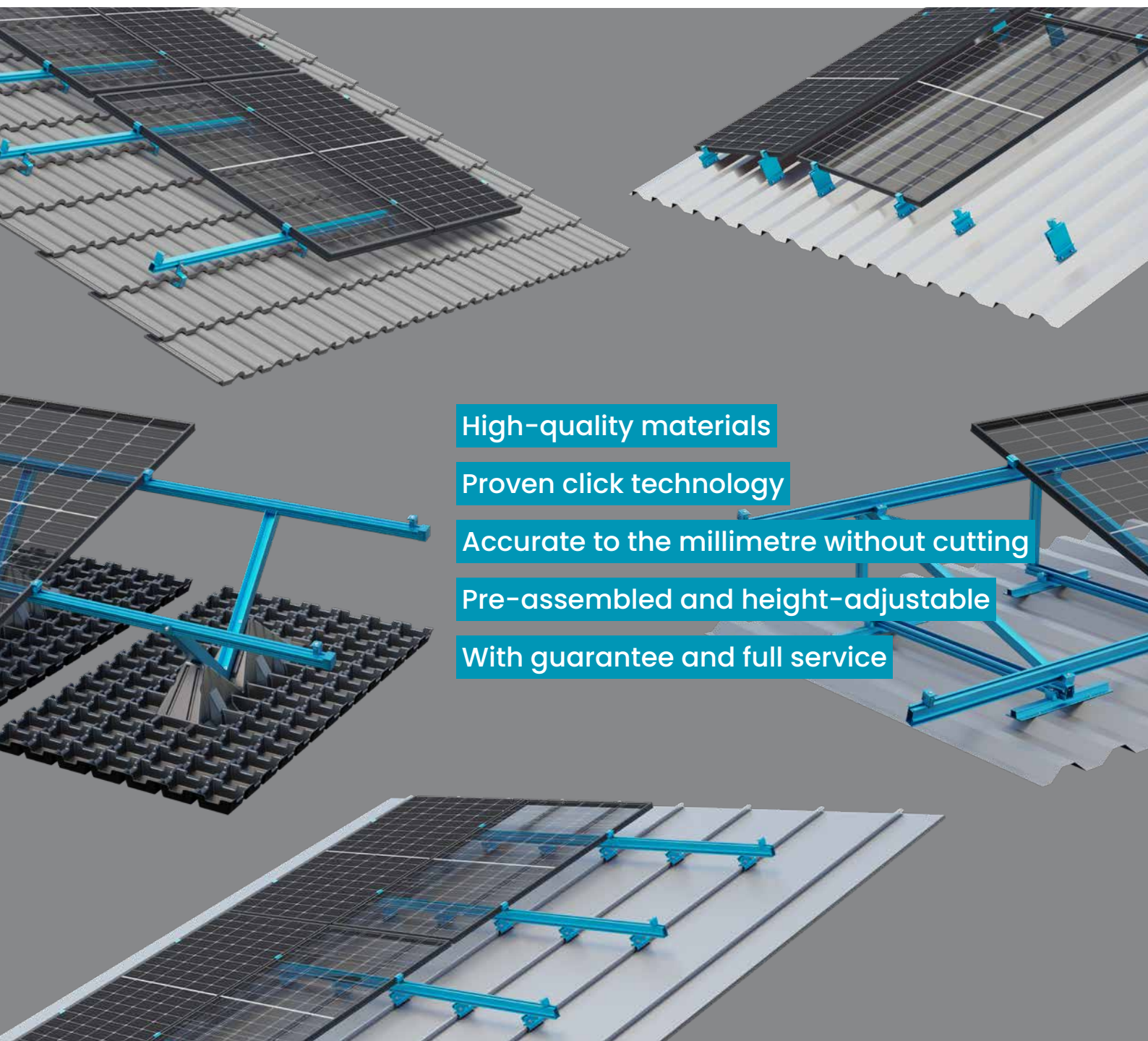




Sustainable energy – securely anchored.

## Photovoltaic mounting systems

For pitched and flat roofs of all kinds, facades and open grounds



High-quality materials

Proven click technology

Accurate to the millimetre without cutting

Pre-assembled and height-adjustable

With guarantee and full service

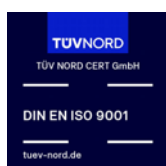


## Sustainable energy – securely anchored.

More than two decades of experience in the solar industry and frame technology flow into the design and production of each of our products. Whether flat roofs, pitched roofs or ground-mounted systems – our range of high-quality mounting systems covers everything from pre-assembled and partially pre-installed substructures to tailor-made solutions, which we always develop in close collaboration with our partners.

In addition to optimising our assembly processes and developing innovative frame details, we place a particular focus on providing services and support for our specialist partners. Advice on product selection, fast delivery direct to the building site, preparation of the structural analysis as well as project planning – S:FLEX is always on hand to help and advise you.

Get to know a team that always makes time to cater to your requirements and to support your project holistically in accordance with your particular needs.



<b>S:FLEX Systems overview</b>	4
<b>Roof integration system</b>	
S:FLEX INmount	6
<b>Facade and pitched roof system</b>	
S:FLEX ELS	7
<b>Pitched roof systems</b>	
S:FLEX Roof hooks	8
S:FLEX Roof hooks Hybrid / XL	9
S:FLEX Roof hooks plain tile	10
S:FLEX Roof mounting kit	11
S:FLEX Standing seam clamps	12
S:FLEX Standing seam clamps and rails	13
S:FLEX High-bead rail HK 125 / 172	14
S:FLEX High-bead rail HK 125 XL 50 / 100	15
S:FLEX Bracket for sheet metal	16
S:FLEX High-bead rail Lift	17
S:FLEX Trapezoidal sheet metal rail Lift	18
S:FLEX Trapezoidal sheet metal rail Vario	19
S:FLEX Trapezoidal sheet metal rail	20
S:FLEX Hanger bolts & Solar fasteners	21
S:FLEX Flat Direct	22
S:FLEX Flat Direct with assembly posts	23
S:FLEX Triangle Delta and hanger bolts	24
S:FLEX Triangle Delta and trapezoidal sheet metal rails	25
<b>Flat roof systems</b>	
S:FLEX LEICHTmount RAIL 2.1 S	26
S:FLEX LEICHTmount RAIL 2.1 EW	27
S:FLEX LEICHTmount CF S	28
S:FLEX LEICHTmount CF EW	29
S:FLEX GreenLight	30
S:FLEX GreenLight ON TOP	31
S:FLEX LEICHTmount SNAP	32
S:FLEX Delta Concrete	33
<b>Open ground systems</b>	
S:FLEX LEICHTmount G S	34
S:FLEX LEICHTmount G EW	35
S:FLEX Delta Concrete	36
<b>S:FLEX Carport</b>	37
<b>Grounding components</b>	38

	Application										
	Pitched roof	Flat roof	Facade	Open ground	Carport	Bitumen	Brickwork	Concrete	Corrugated sheet	Corrugated fibre cement	Foil
S:FLEX INmount	●										
S:FLEX ELS	●		●				●	●	●		
S:FLEX Roof hooks	●										
S:FLEX Roof mounting kit	●								●		
S:FLEX Standing seam clamps	●										
S:FLEX High-bead rail HK 125 / 172	●										
S:FLEX High-bead rail HK 125 XL 50 / 100	●										
S:FLEX Bracket for sheet metal	●										
S:FLEX High-bead rail Lift	●										
S:FLEX Trapezoidal sheet metal rail Lift/Vario	●										
S:FLEX Trapezoidal sheet metal rail	●								●		
S:FLEX Hanger bolts & Solar fasteners	●								●	●	
S:FLEX Flat Direct	●					●					●
S:FLEX Triangle Delta	●	●				●		●	●	●	●
S:FLEX LEICHTmount RAIL 2.1 S		●				●		●			●
S:FLEX LEICHTmount RAIL 2.1 EW		●				●		●			●
S:FLEX LEICHTmount CF S		●				●		●			●
S:FLEX LEICHTmount CF EW		●				●		●			●
S:FLEX GreenLight		●						●			
S:FLEX GreenLight ON TOP		●						●			
S:FLEX LEICHTmount SNAP		●				●		●			●
S:FLEX Delta Concrete		●		●				●			
S:FLEX LEICHTmount G S				●				●			
S:FLEX LEICHTmount G EW				●				●			
S:FLEX Carport					●			●			

○ prior authorization of the manufacturer to mount onto the cover shell necessary  
● optional

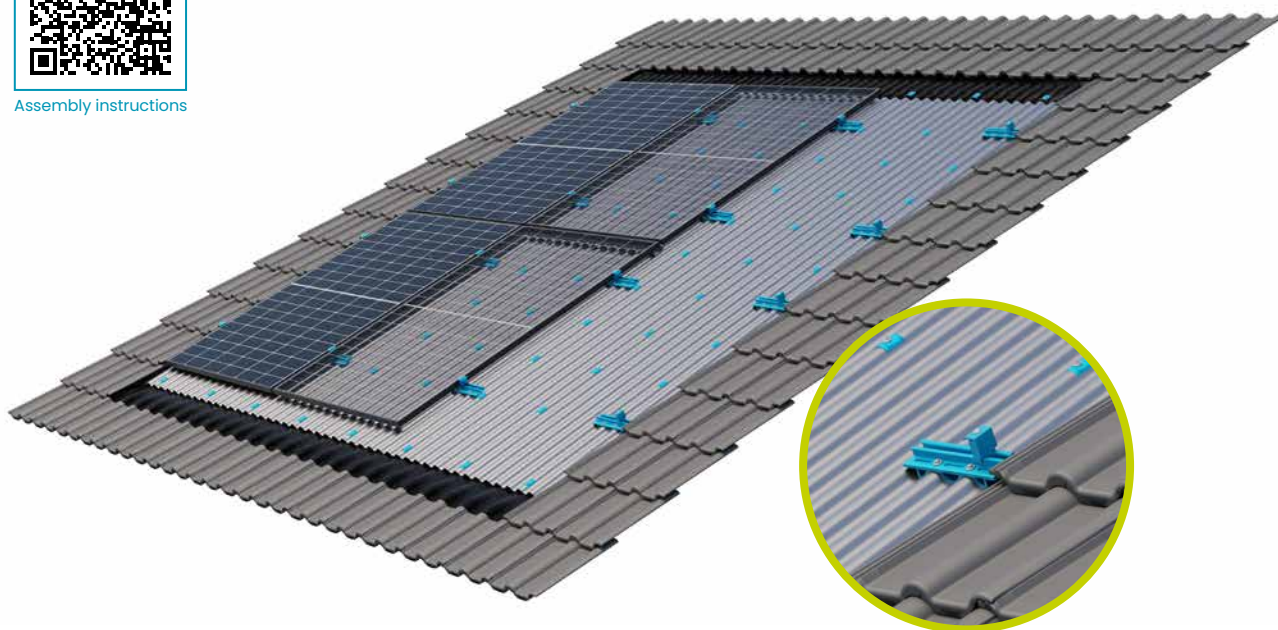
Roof coverings, Surfaces A-Z															Clamping area			
Gravel	Green roof	Industrial metal system roofs (e.g. Domico, Klip Lok)	Noise barrier wall	Pan sheet	Plain tiles	Rear-ventilated facade	Roof tiles	Sandwich roofing	Seam roofing	Slate	Soil	Thermal insulation system	Trapezoidal sheet	Trapezoidal sheet (curved)	Long Side	Short Side	Edge	Insertion system
			●			●	●		●			●			●	●		●
					●		●			●					●	●		
		●			●		●		●	●					●	●		
					●					●			●		●	●		
									●						●	●		
								○					●		●	●		
								○					●		●	●		
								○					●		●	●		
				●				●					●	●	●	●		
								○					●		●	●		
								●					●		●	●		
●	●							●					●		●	●		
●															●	●	●	
●	●										●				●	●		
●	●										●				●	●		
●															●	●	●	
●											●				●	●		
●											●				●	●		
●											●				●	●		
●											●				●	●		
●											●				●	●		

General information: All transactions are subject to the terms and conditions of S:FLEX, published online at [www.sflex.com/general-terms-and-conditions](http://www.sflex.com/general-terms-and-conditions), as well as additional agreements confirmed by acceptance of the order. All prices in EUR, excl. VAT. Delivery solely in packing units. We reserve the right to make changes in design and technique, dimensions, weight and materials for the purpose of improving products. Illustrations without obligation. Errors, omissions and changes excepted. With publication of this catalogue other catalogues lose their validity.





Assembly instructions



**S:FLEX INmount**  
Adapter portrait, 210 mm



**Corrugated**  
aluminium sheet



**End clamp AK II Klick 30-50 A**



**Mid clamp AK II Klick 30-50 A**

**Application:**

Pitched roofs with tile/concrete tile roof covering

**Roof construction:**

battening analogue to tile roofing

**Roof pitch:**

22° – 45° (above upon request)

**Module type:**

framed and frameless modules

**Module orientation:**

portrait / landscape

**Module layout:**

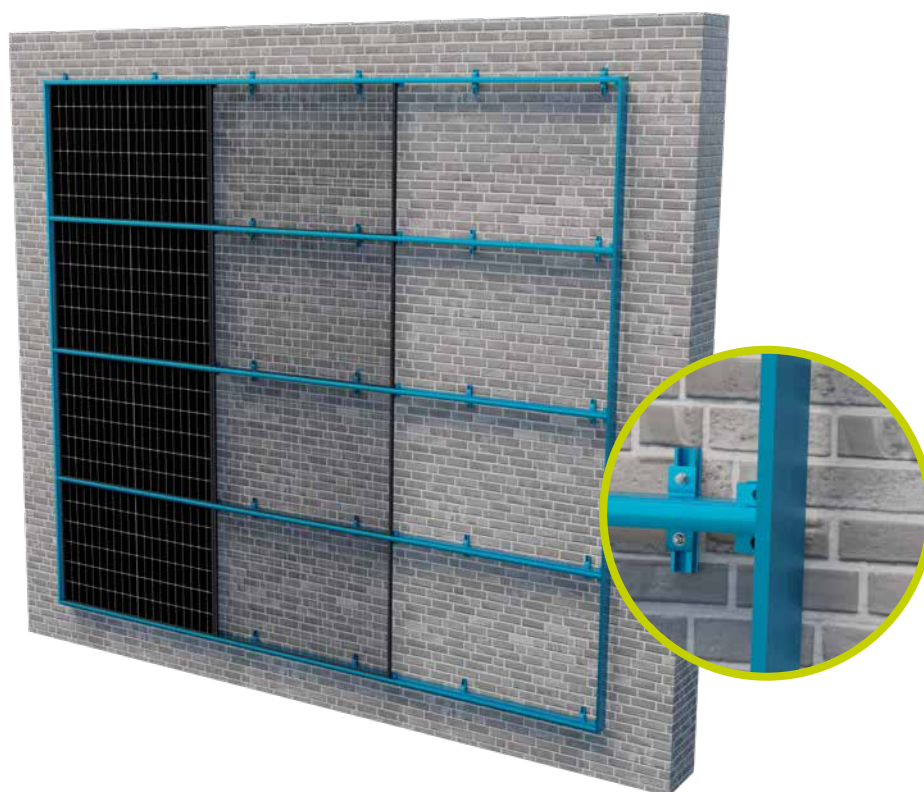
contiguous surfaces, covering of the entire roof surface and integration of skylights possible (prior inspection required)

**Advantages:**

- Simple and quick to install solution for visually appealing roof integration in old and new buildings
- Replaces existing roof covering
- Connection to existing battens optimises force transmission and avoids thermal bridges
- For all common rafter distances



Assembly instructions



ELS rail



ELS side cladding



ELS eaves cladding



ELS fix clamp



ELS cross adapter clamp

### Application:

Facades, noise protection walls and massive balustrades or pitched roofs with roof tiles, sheet metal roofs

### Fastening:

Facade: on-site

Pitched roof: compatible with all S:FLEX fastening solutions for tiled roofs and metal sheet roofing

### (Roof-) Pitch:

Pitched roof: 10° – 75°

Facade: 75° – 90°

### Module type:

framed modules

### Module orientation:

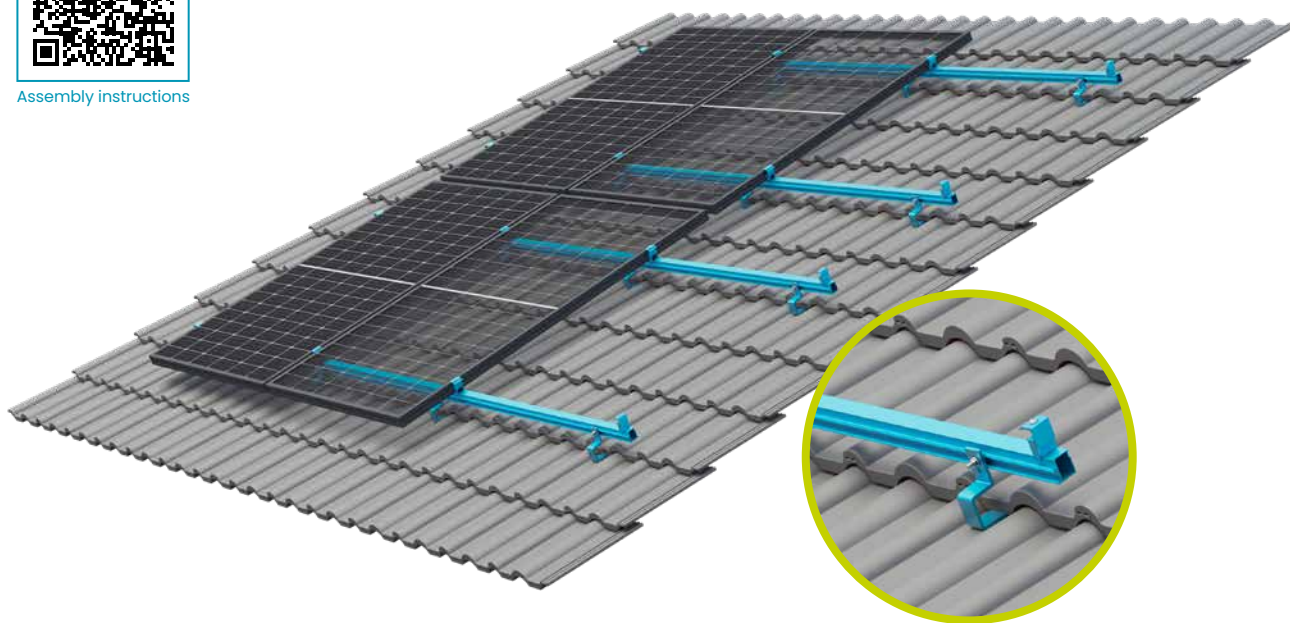
portrait / landscape

### Advantages:

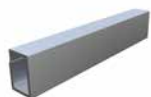
- Aesthetically pleasing modular surfaces with clean finishes
- All components for a special look available in black
- Suitable for module frame heights of 25 to 45 mm – using just one type of insertion rail
- Newly developed module clamps that prevent rattling of the modules and thermally induced glass breakage/cracks
- Optimized service-friendliness: maintenance joints allow easy access to modules



Assembly instructions



Mounting rail ST-AK 5/40



Splice 5



End clamp AK II Klick 30-50 A



Mid clamp AK II Klick 30-50 A



Roof hook Alu 93-7-45

**Application:**

Pitched roof with tiles  
(e.g. roof tiles, interlocking tiles)

**Fastening:**

Roof hook on rafters (min. rafter width 36 mm)

**Roof pitch:**

up to 75°

**Module type:**

framed and frameless modules

**Module orientation:**

portrait / landscape

**Mounting method:**

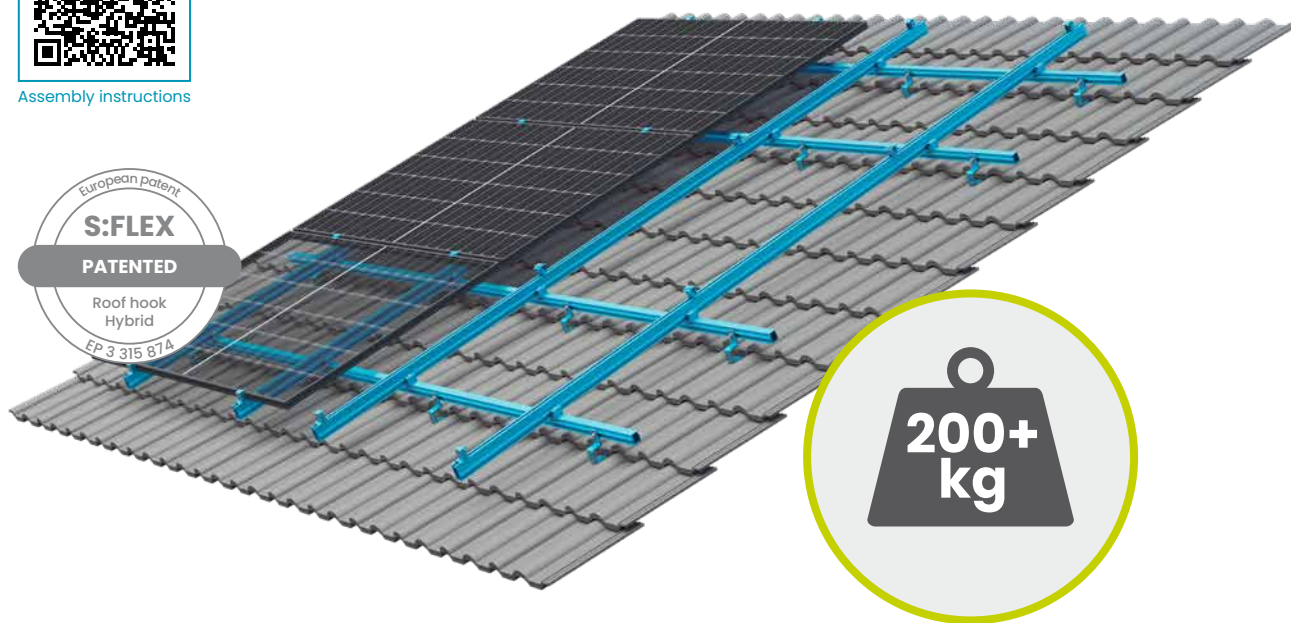
single layer / double layer

**Advantages:**

- Every size of module array possible
- Height compensation:  
40 – 58 mm in the batten zone  
21 mm in the rail zone
- For all common rafter distances



Assembly instructions



Mounting rail ST-AK 13/60



Splice 13



End clamp AK II Klick 30-50 A



Mid clamp AK II Klick 30-50 A



Roof hook Hybrid 112-7-46  
(XL) 8 mm



Metal roof tile  
e.g. concrete type

**Application:**

Pitched roof with tiles  
(e.g. roof tiles, interlocking tiles)

**Fastening:**

Roof hook on rafters (min. rafter width 45 mm)

**Roof pitch:**

up to 75°

**Module type:**

framed and frameless modules

**Module orientation:**

portrait / landscape

**Mounting method:**

single layer / double layer

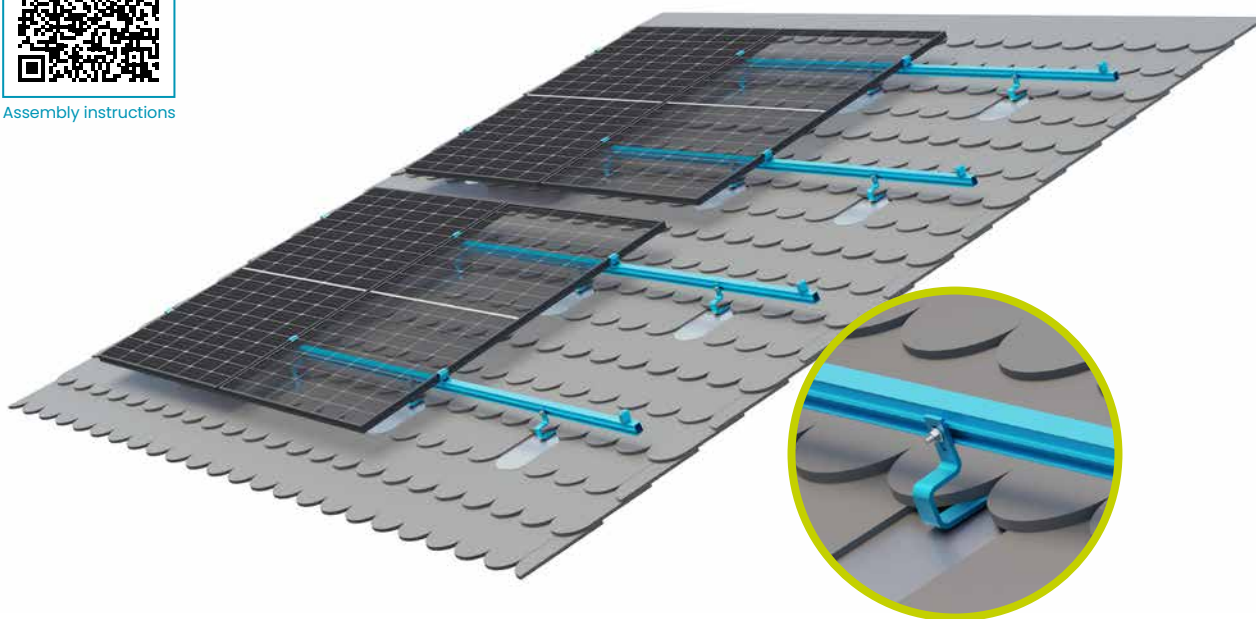
**Advantages:**

- Suitable for particularly high loads
- Also available as XL version for large-format tiles
- Use of metal roof tiles provides additional protection for the roof covering
- Every size of module array possible
- Height compensation in the batten zone:  
46 - 61 mm (DH Hybrid)  
56 - 72 mm (DH Hybrid XL)
- For all common rafter distances





Assembly instructions



Mounting rail ST-AK 5/40



Splice 5



End clamp AK II Klick 30-50 A



Mid clamp AK II Klick 30-50 A



Roof hook plain tile 30x6



Metal roof tile type  
"Biber Vario" zinc plated

**Application:**

Pitched roof with plain tiles

**Fastening:**

Roof hook on rafters (min. rafter width 48 mm)  
with matching metal roof tile

**Roof pitch:**

up to 75°

**Module type:**

framed and frameless modules

**Module orientation:**

portrait / landscape

**Mounting method:**

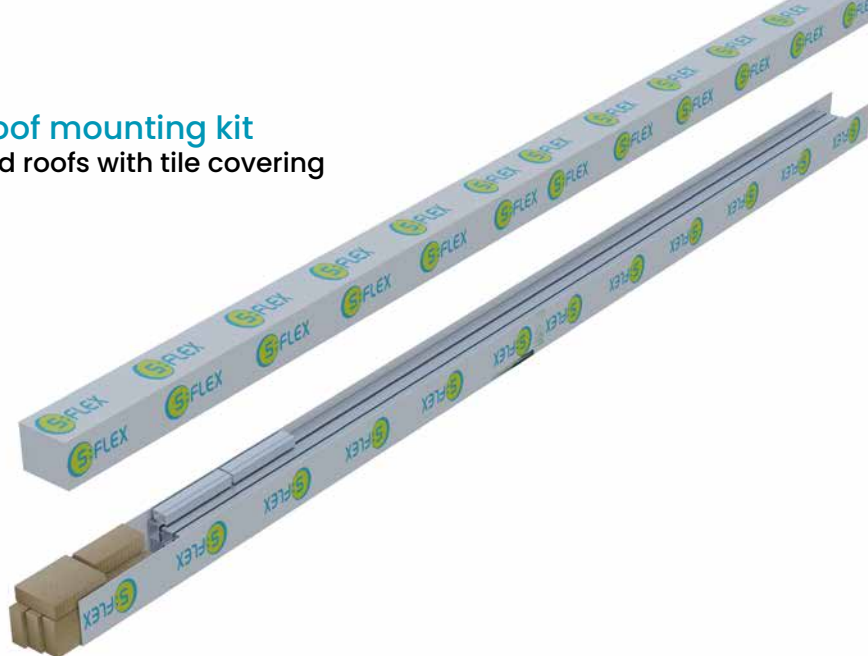
single layer / double layer

**Advantages:**

- Every size of module array possible
- For all common rafter distances
- Installation from a rafter width of 48 mm possible
- Components made of weather-resistant aluminium and stainless steel
- Structural design by our team includes the structural analysis as well as the mounting rail- and fastener plan



Assembly instructions



Kit	Mounting rails	Cover caps	Splices	Roof hooks	Mid clamps	End clamps	Wood screws
Basis 1 module	2	4		4		4	12
Expansion 1 module	2		2	3	2		9
Expansion 2 modules	4		4	6	4		18
Universal 3 modules	3	4	2	10	6	4	30



Mounting rail ST-AK 5/40



Splice 5



Roof hook Alu 93-7-45



End clamp AK II Klick 30-50 A



Mid clamp AK II Klick 30-50 A



Wood screws

### Application:

Pitched roof with tiles, optionally also available for plain tiles, slate tiles and sheet metal roofing

### Module type:

framed modules

### Module orientation:

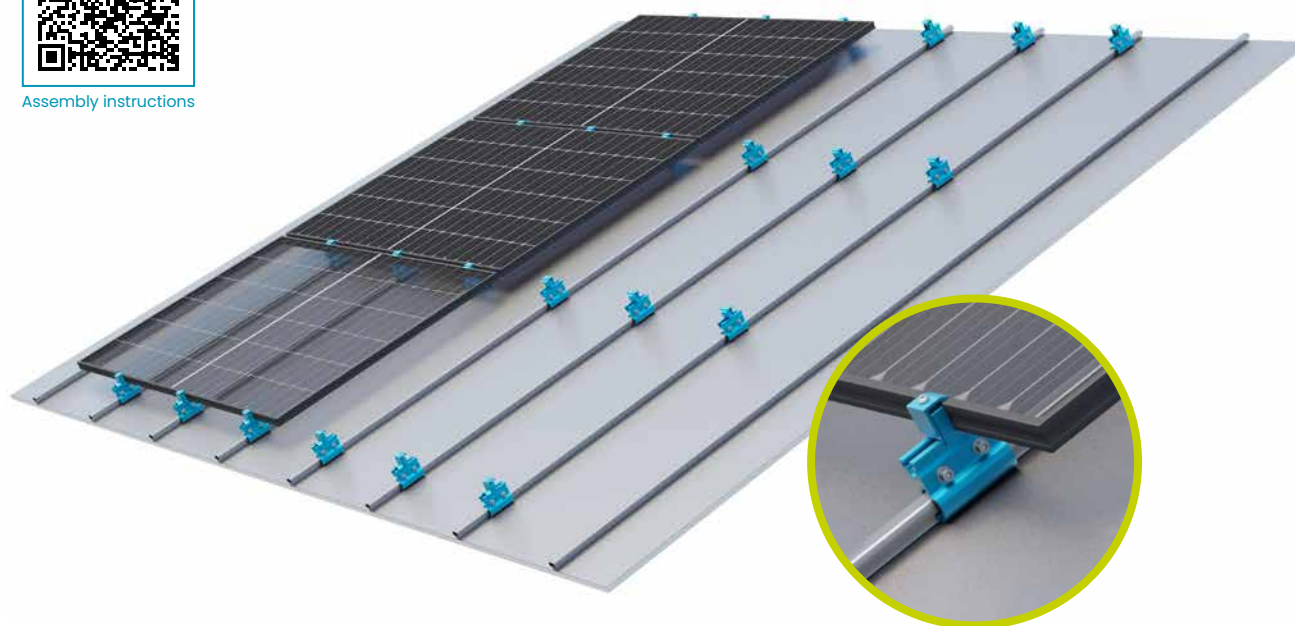
portrait,  
optionally also available for landscape installation

### Advantages:

- Flexible and universal application via basic packages and extension sets with all components for individual configurations
- Minimal planning effort without time-consuming creation of parts lists
- Short term availability, low shipping costs and excellent suitability for storage
- Fast installation thanks to thought out technology and numerous pre-installed parts



Assembly instructions



Standing seam clamp 2.1



Standing seam clamp CL



Standing seam clamp DCO



End clamp AK II Klick 30-50 A



Mid clamp AK II Klick 30-50 A

### Application:

#### Standing seam clamp 2.1:

Seamed roofing, e.g. standing seam, round seam, angle seam

#### Standing seam clamp DCO und CL:

Industrial metal roof systems,  
e.g. Domitec/GBS, Klip-Lok 700, RibRoof 465

### Fastening:

non-penetrative

### Roof pitch:

up to 75°

### Module type:

framed modules

### Module orientation:

portrait / landscape (for clamping on the short side)

### Mounting method:

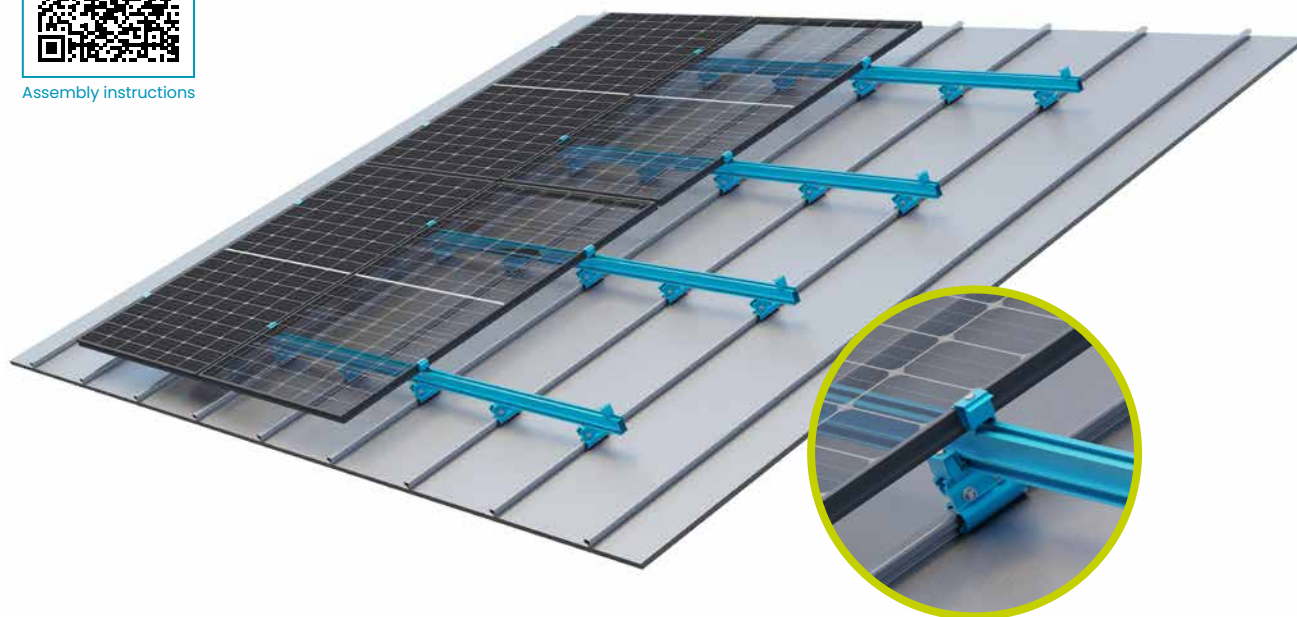
direct clamping

### Advantages:

- Modules mounted directly to the standing seam clamps
- No rails necessary
- Low material/logistics/installation costs
- Quick mounting
- No roof penetration



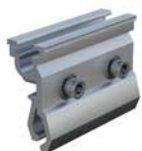
Assembly instructions



Standing seam clamp 2.1



Standing seam clamp CL



Standing seam clamp DCO



Cross adapter clamp AK



Mounting rail ST-AK 13/60

### Application:

#### Standing seam clamp 2.1:

Seamed roofing, e.g. standing seam, round seam, angle seam

#### Standing seam clamp DCO und CL:

Industrial metal roof systems,  
e.g. Domitec/GBS, Klip-Lok 700, RibRoof 465

### Fastening:

non-penetrative

### Roof pitch:

up to 75°

### Module type:

framed modules

### Module orientation:

portrait / landscape (for clamping on the short side)

### Mounting method:

single layer

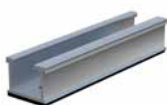
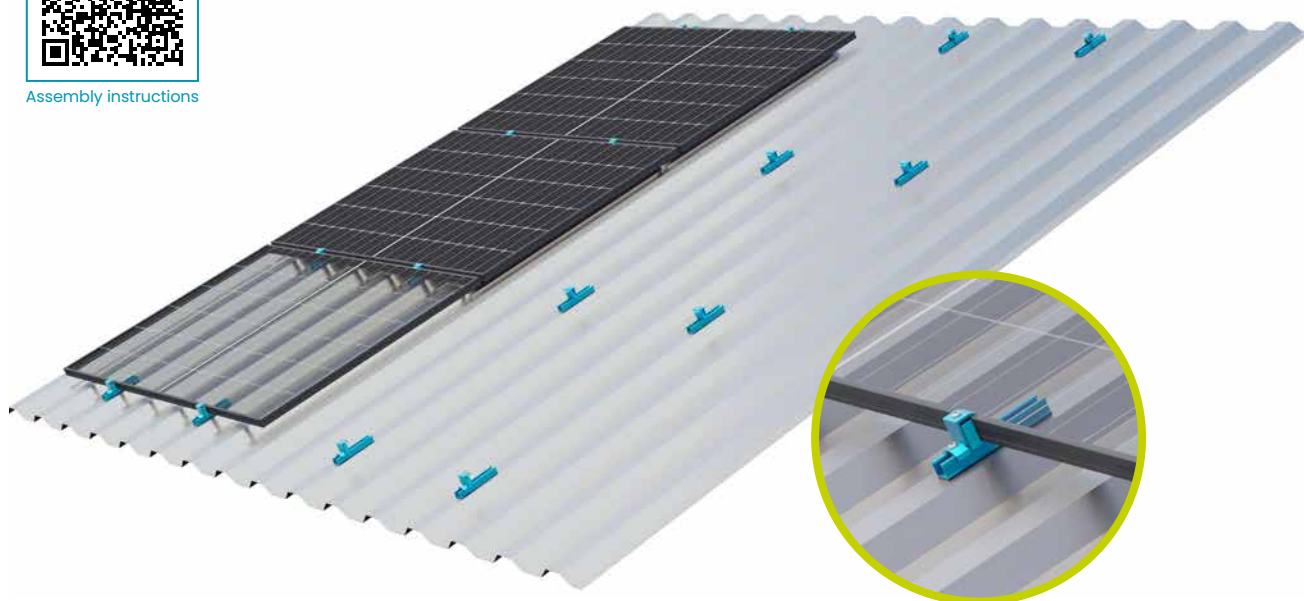
### Advantages:

- Low material/installation costs
- Length of rails 3150 mm to 6200 mm
- High rigidity rails suitable for heavier loads
- No roof penetration





Assembly instructions



HS rail HK 125 complete



HS rail HK 172 complete



End clamp AK II Klick 30-50 A



Mid clamp AK II Klick 30-50 A



Sheet metal screw 4,5x25



Sheet metal screw 6,0x25

**Application:**

Trapezoidal sheet metal

**Fastening:**

screwed onto raised corrugations

**Roof pitch:**

up to 75°

**Module type:**

framed modules

**Module orientation:**

landscape

**Mounting method:**

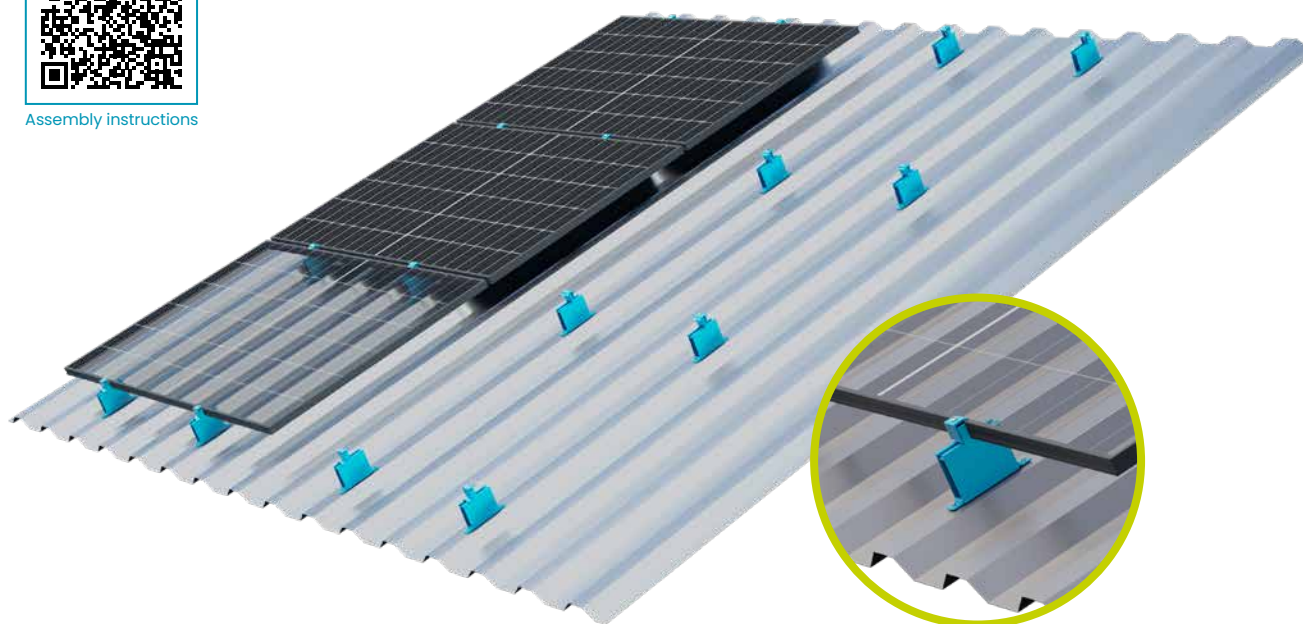
direct clamping

**Advantages:**

- Low material / fitting costs
- 24 mm height provide better rear ventilation, simplify cable routing, enable installation even on slightly corrugated roof coverings and offer more space for power optimizers or micro-inverters
- Rail lengths of 125 mm, 172 mm, 295 mm and 3300 mm
- High-bead rails HS HK I=125 mm and I=172 mm are supplied pre-fabricated with EPDM sealing tape, the 125 mm rail with 2 x 2 pre-drilled holes (5 / 6 mm), the 172 mm rail with 2 x 4 pre-drilled holes (5 / 6 mm)



Assembly instructions



HS rail HK 125 XL 50 complete



HS rail HK 125 XL 100 complete



HS bracket XL 130-6,5



End clamp AK II Klick 30-50 A



Mid clamp AK II Klick 30-50 A

**Application:**

Trapezoidal sheet metal

**Fastening:**

screwed or riveted onto raised corrugations

**Roof pitch:**

up to 75°

**Module type:**

framed modules

**Module orientation:**

landscape

**Mounting method:**

direct clamping, floating mounting

**Advantages:**

- Low material / fitting costs
- Rail heights of 50 or 100 mm guarantee a sufficient distance from the roof covering for optimal rear ventilation and use at high temperatures
- Floating mounting with brackets reduces the number of expansion joints and enables optimal use of the roof area
- High-bead rails covered with protective fleece
- Brackets come pre-drilled and with EPDM sealing tape



Assembly instructions



**Bracket for sheet metal installation**



**Mounting rail ST-AK 5/40**



**Mounting rail ST-AK 13/60**



**End clamp AK II Klick 30-50 A**



**Mid clamp AK II Klick 30-50 A**

**Application:**

Trapezoidal sheet metal

**Fastening:**

riveted or screwed onto raised seams

**Roof pitch:**

up to 75°

**Module type:**

framed and frameless modules

**Module orientation:**

portrait / landscape

**Mounting method:**

single layer

**Advantages:**

- Low fitting costs
- Every size of module array possible
- Height adjustable via elongated hole in the sheet metal bracket
- Sheet metal brackets are supplied prefabricated with 2 holes (5 mm) and EPDM sealing tape covered bottom side



Assembly instructions



Front rail with small adapter



Rear rail with large adapter



End clamp AK II Klick 30-50 A



Mid clamp AK II Klick 30-50 A

**Application:**

Trapezoidal sheet metal

**Orientation:**

south and east-west

**Fastening:**

screwed with sheet metal screws onto raised seams

**Roof pitch:**

up to 20°

**Module type:**

framed modules

**Module orientation:**

portrait / landscape

**Module pitch:**

5° with portrait installation

7° with landscape installation

**Mounting method:**

direct clamping

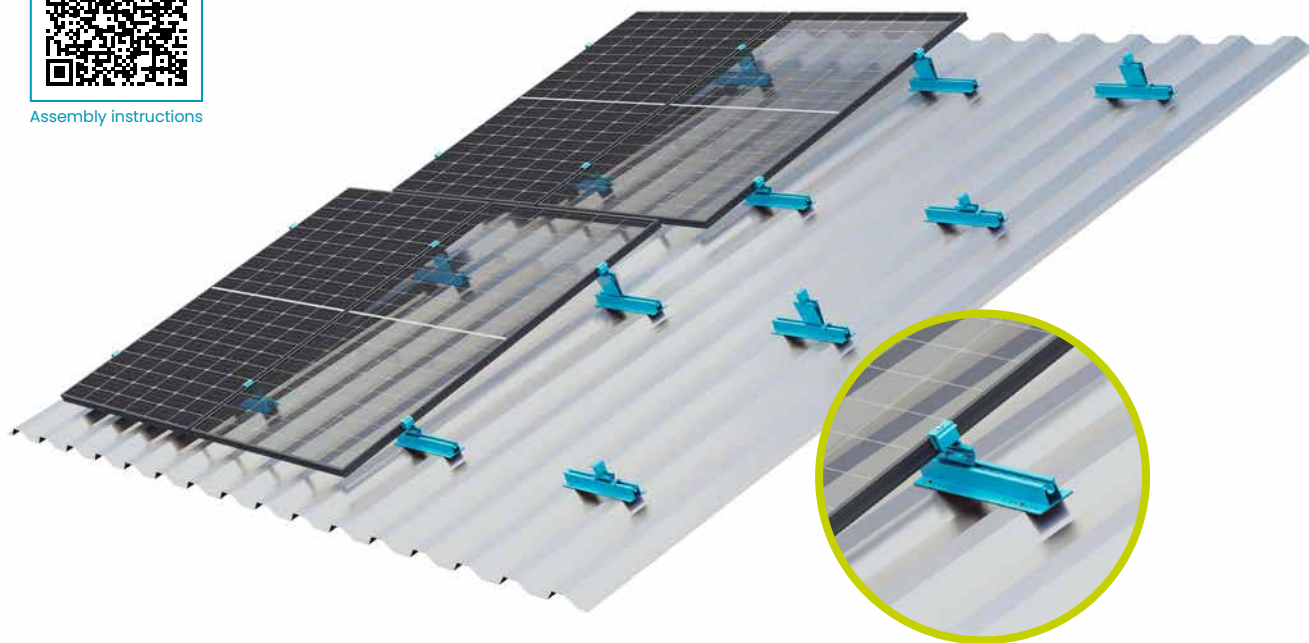
**Advantages:**

- Low material and fitting costs
- Optimised irradiation angles for higher yields
- Better self-cleaning
- Prefabricated with holes and EPDM sealing tape





Assembly instructions



Lift Multi adapter  
rear



Lift Multi adapter  
front



Trapezoidal sheet  
metal rail Lift375



End clamp AK II Klick 30-50 A



Mid clamp AK II Klick 30-50 A

**Application:**

Trapezoidal sheet metal

**Fastening:**

riveted or screwed onto raised seams

**Roof pitch:**

up to 15° with portrait installation,  
up to 13° with landscape installation

**Module type:**

framed modules

**Module orientation:**

portrait / landscape

**Module pitch:**

5° with portrait installation  
7° with landscape installation

**Mounting method:**

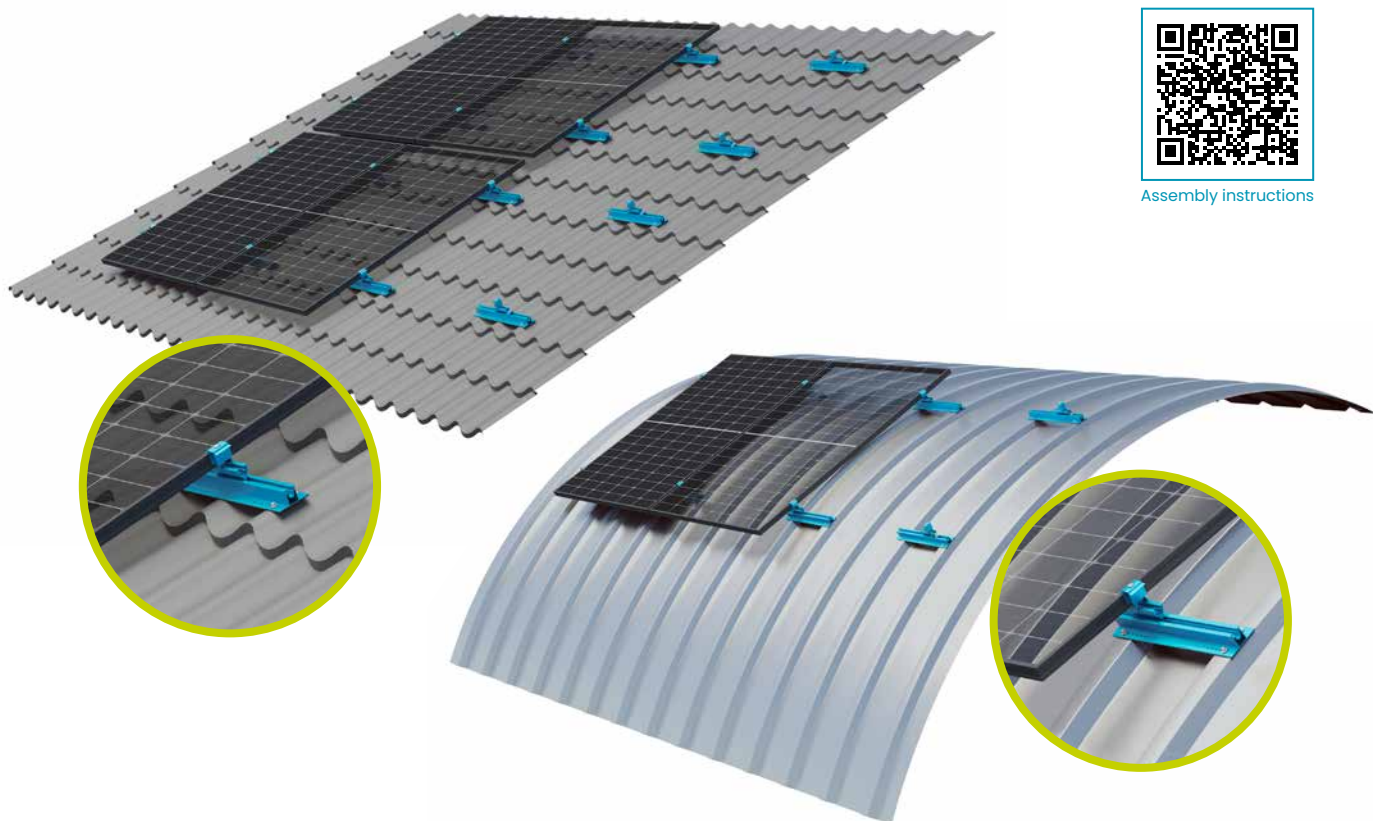
direct clamping

**Advantages:**

- Additional raise on slightly inclined roofs
- Optimised rear ventilation and module pitch
- Low material and fitting costs
- Variable length of module rows
- Trapezoidal sheet metal rail Lift is supplied prefabricated with 26 holes (5 mm) and EPDM sealing tape covered bottom side



Assembly instructions



**Trapezoidal sheet metal rail Vario with Multi adapter front**



**End clamp AK II Klick 30-50 A**



**Mid clamp AK II Klick 30-50 A**

**Application:**

Curved pan- and trapezoidal sheet metal  
(barrel roofs with a radius larger than 3.5 m)

**Fastening:**

riveted or screwed onto raised seams

**Roof pitch:**

up to 75°

**Module type:**

framed modules

**Module orientation:**

portrait / landscape

**Mounting method:**

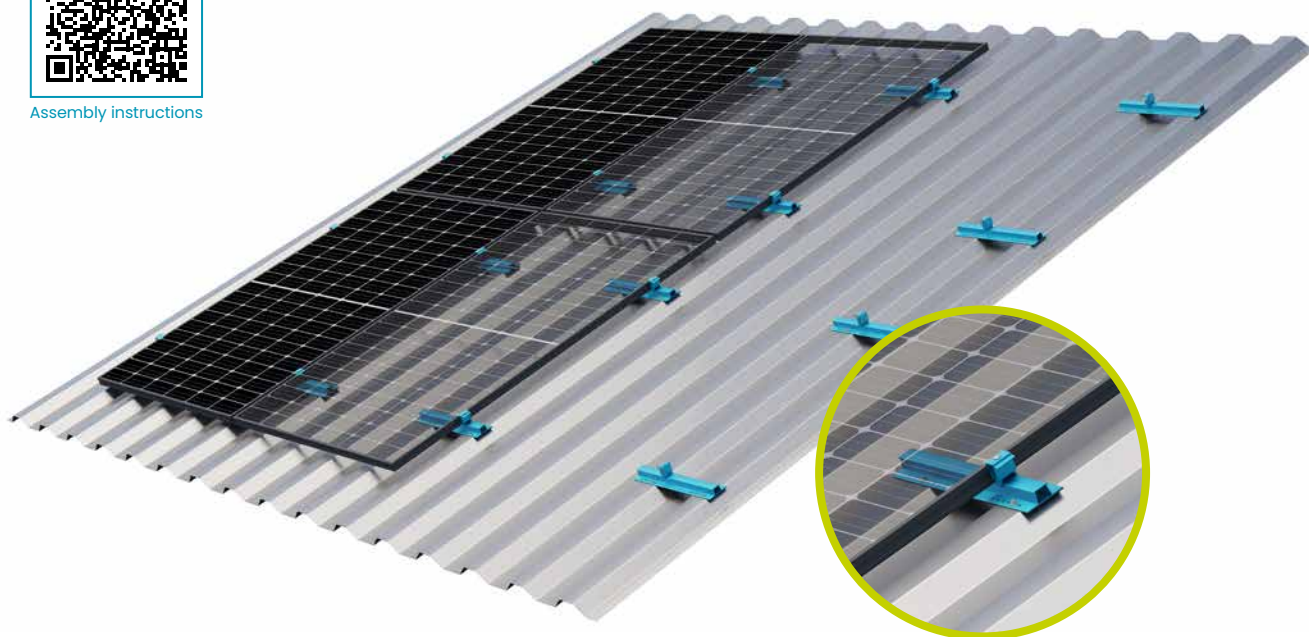
direct clamping

**Advantages:**

- Tension-free installation on barrel roofs
- Tension-free installation on pan sheet roofs
- Perfectly adapted to the roof shape
- Trapezoidal sheet metal rail Vario is supplied prefabricated with 26 holes (5 mm) and EPDM sealing tape



Assembly instructions



**Trapezoidal sheet metal rail AK I=395 mm**



**Mounting rail ST-AK 13/60**



**Cross adapter clamp AK**



**End clamp AK II Klick 30-50 A**



**Mid clamp AK II Klick 30-50 A**

**Application:**

Trapezoidal and corrugated sheet metal

**Fastening:**

screwed or riveted onto raised corrugations

**Roof pitch:**

up to 75°

**Module type:**

framed and frameless modules

**Module orientation:**

portrait / landscape

**Mounting method:**

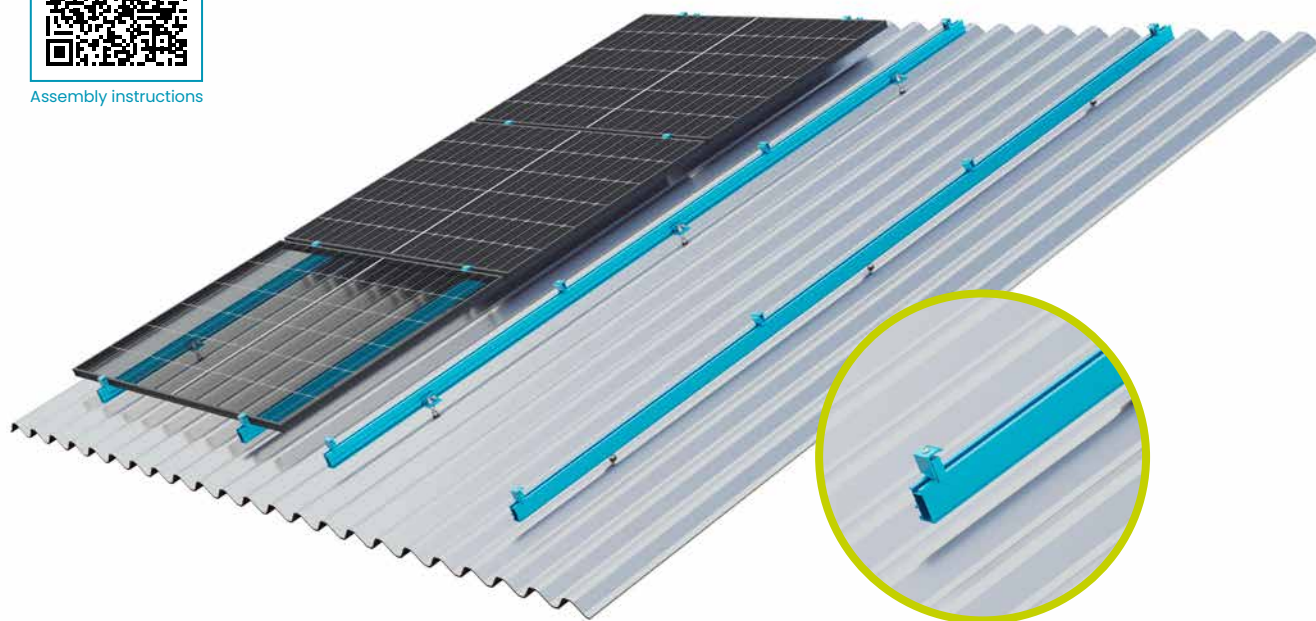
direct clamping, single layer, optional double layer

**Advantages:**

- Low material / fitting costs
- Every size of module array possible
- Rail lengths of 395 mm, 3150 mm and 6200 mm
- High rigidity rails suitable for heavier loads
- Rail segments 395 mm  
(Trapezoidal sheet metal AK I=395 mm)  
are supplied prefabricated with 24 holes (5 mm)  
and EPDM sealing tape



Assembly instructions



Mounting rail ST-AK 13/60



End clamp AK II Klick 30-50 A



Mid clamp AK II Klick 30-50 A



Bracket 60mm, M10



Solar fastener type BZ  
8,0/M10x200/50  
for metal rafters

Hanger bolt  
M10x200



### Application:

Trapezoidal sheet metal-, corrugated fibre cement-, sandwich roofs

### Fastening:

Hanger bolts / solar fasteners with brackets

### Roof pitch:

up to 75°

### Module type:

framed and frameless modules

### Module orientation:

portrait / landscape

### Mounting method:

single layer, optional double layer

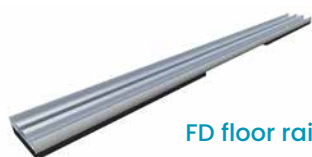
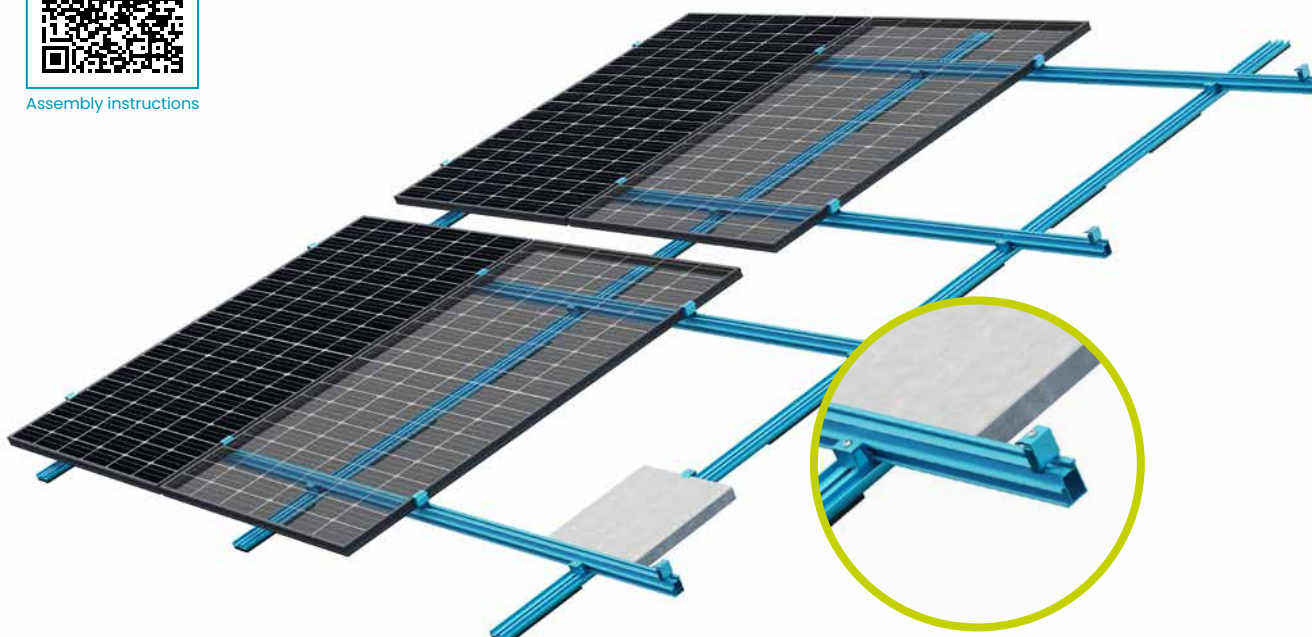
### Advantages:

- Low fitting costs
- Height adjustable
- Suitable for large distances between rafters
- Solar fastener type A or hanger bolts for wood rafters / solar fastener type BZ for metal rafters

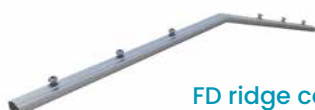




Assembly instructions



FD floor rail



FD ridge connector Type 750 II



Mounting rail ST-AK 7/47



Cross adapter clamp AK



End clamp AK II Klick 30-50 A



Mid clamp AK II Klick 30-50 A

**Application:**

Pitched roofs with foil / bitumen roofing and sandwich elements; other roof types upon request

**Fastening:**

aerodynamic, parallel to the roof, non-penetrative, additional ballast

**Roof pitch:**

up to 30°

**Module type:**

framed modules

**Module orientation:**

portrait

**Mounting method:**

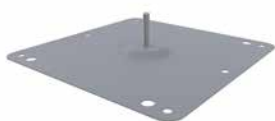
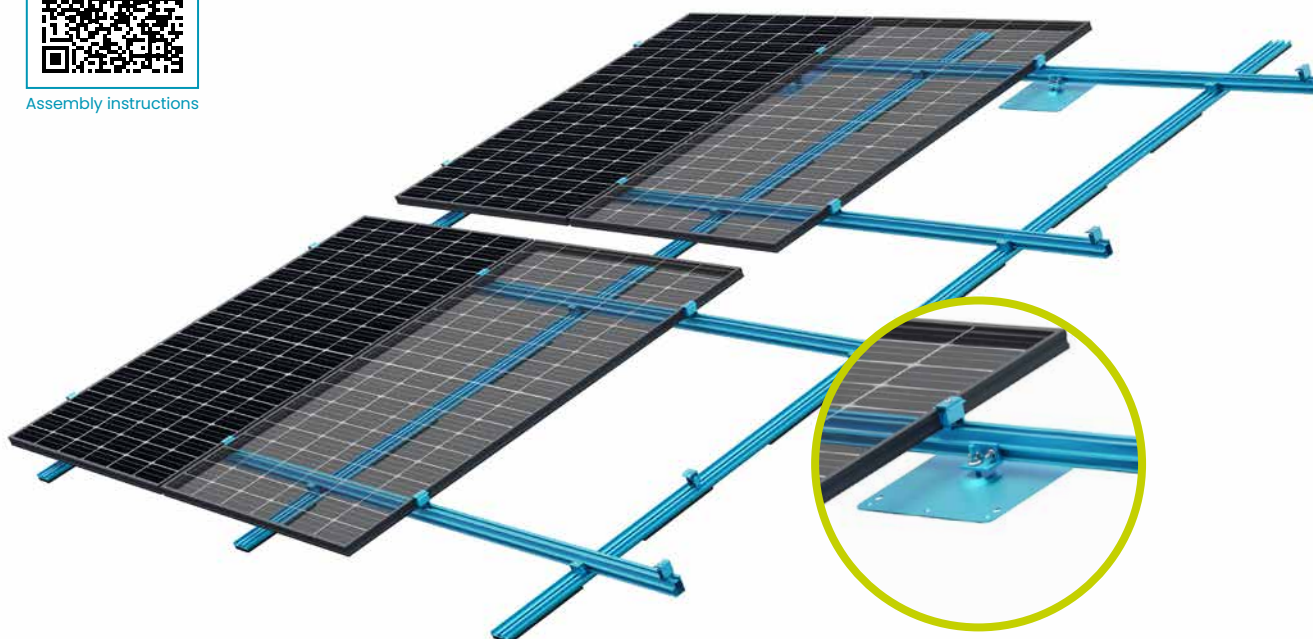
double layer

**Advantages:**

- No roof penetration
- Minimised additional ballast thanks to aerodynamic optimisation
- Perfect for east-west orientation like saddle roof, double-sided
- Has lightning-current-carrying capacity
- Optional roof connection points extend potential uses



Assembly instructions



Assembly post PVC pure



Ridge rail FS 9/40



Covering



Bracket 60mm, M10



End clamp AK II Klick 30-50 A



Mid clamp AK II Klick 30-50 A

**Application:**

Pitched roofs with foil / bitumen roofing;  
other roof types upon request

**Fastening:**

aerodynamic, parallel to the roof,  
minimal amount of roof penetrations

**Roof pitch:**

up to 30°

**Module type:**

framed modules

**Module orientation:**

portrait

**Mounting method:**

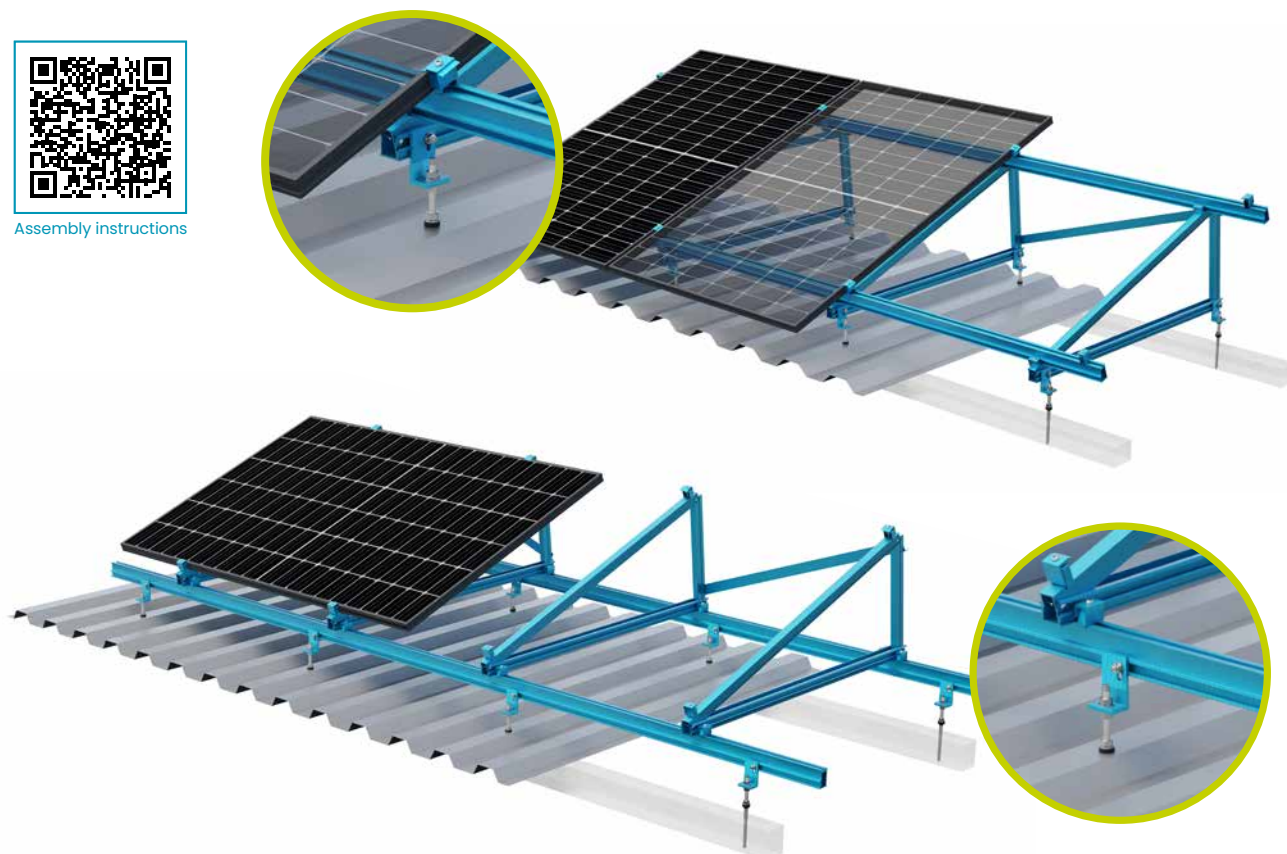
double layer

**Advantages:**

- Mounted with building authority approved assembly posts, also optional for reducing ballasting
- Minimised additional ballast thanks to aerodynamic optimisation
- Perfect for east-west orientation like saddle roof, double-sided
- Has lightning-current-carrying capacity
- Optional roof connection points extend potential uses



Assembly instructions



Mounting rail  
ST-AK 13/60



Cross adapter clamp AK



Bracket 60mm, M10



Hanger bolt  
M10x200



S:FLEX Triangle Delta  
AK 1230 5° - 45°

### Application:

On flat pitched and pitched roofs with coverings made of trapezoidal sheet metal, corrugated fibre cement and sandwich elements

### Module type:

framed and frameless modules

### Module orientation:

portrait / landscape

### Module pitch:

available in increments of 5° up to 45°, other angles available upon request

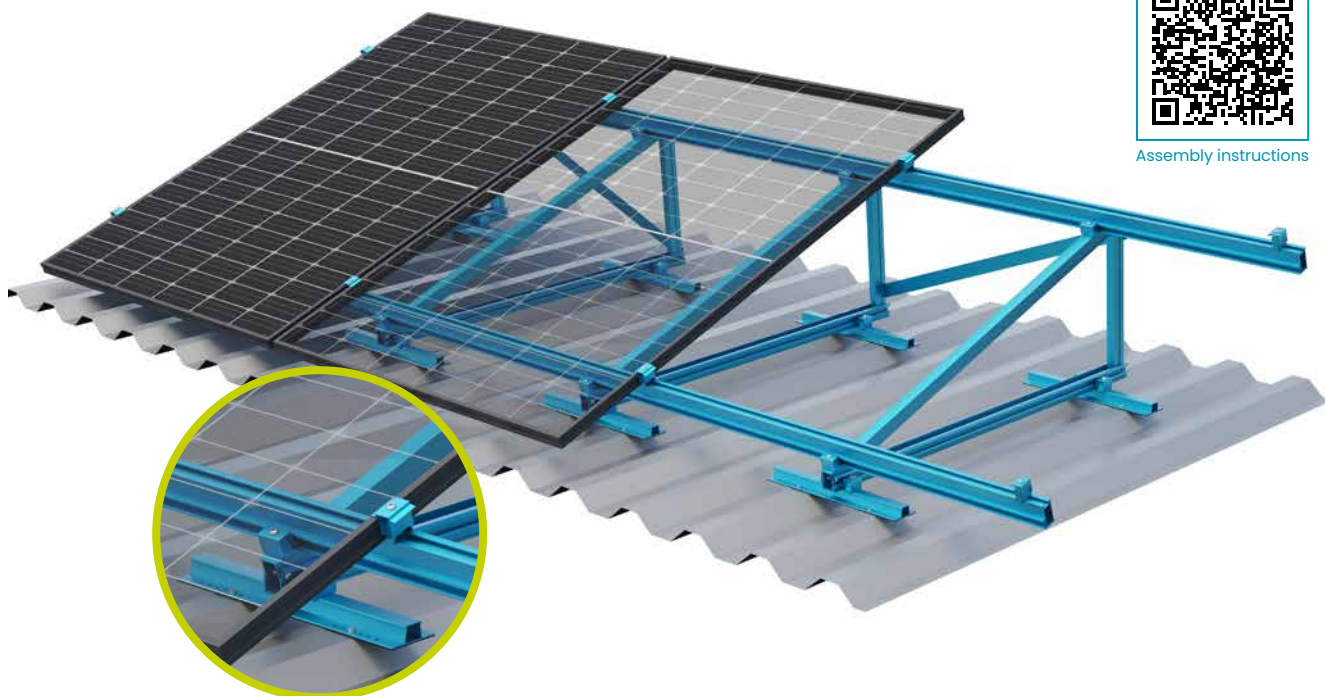
### Advantages:

- Free choice of size and position of the module array possible
- Perfect also for small systems of 1, 2, 4 or 8 modules
- Triangles are shipped folded up for less freight and storage costs





Assembly instructions



**Mounting rail**  
**ST-AK 13/60**



**Trapezoidal sheet**  
**metal rail I=395 mm**



**Cross adapter clamp AK**



**S:FLEX Triangle Delta**  
**AK 1230 5° - 45°**

**Application:**

On flat pitched and pitched roofs with coverings made of trapezoidal sheet metal, corrugated fibre cement and sandwich elements. Ballasted on flat roofs.

**Module type:**

framed and frameless modules

**Module orientation:**

portrait / landscape

**Module pitch:**

available in increments of 5° up to 45°, other angles available upon request

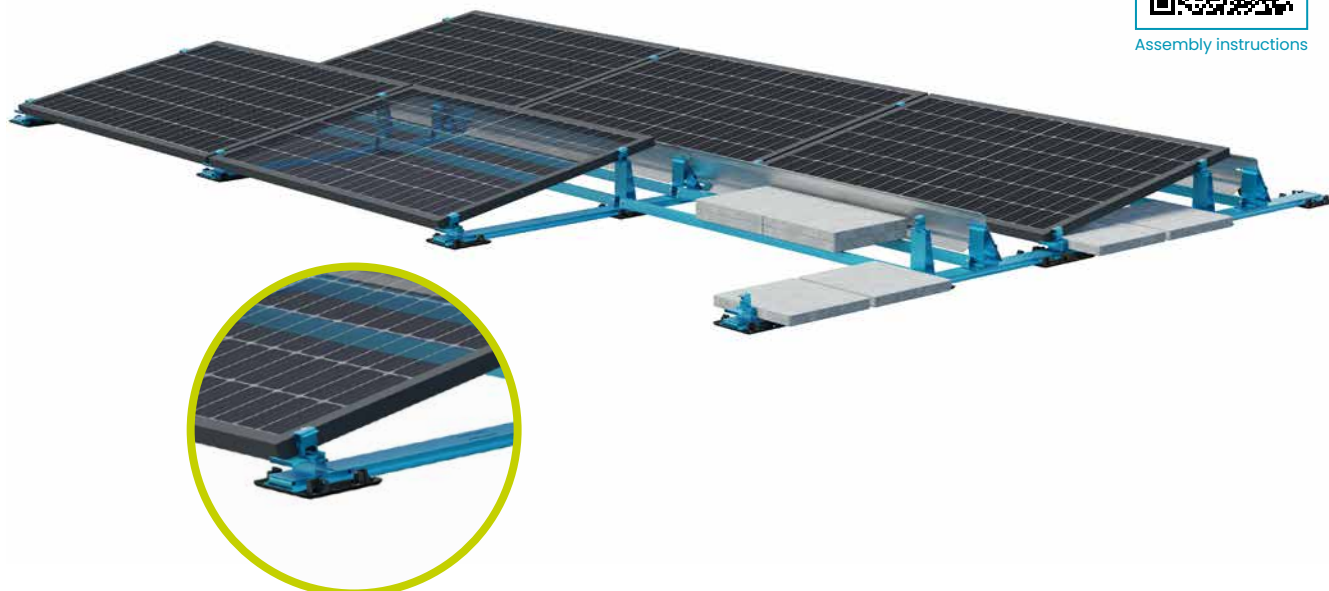
**Advantages:**

- Free choice of size and position of the module array possible
- Perfect also for small systems of 1, 2, 4 or 8 modules
- Triangles are shipped folded up for less freight and storage costs





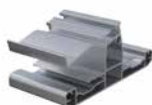
Assembly instructions



LEICHTmount RAIL 2.1 S  
Ground rail



LEICHTmount RAIL 2.1  
Foot plate



LEICHTmount RAIL 2.1  
Base



LEICHTmount RAIL 2.1  
Tower



End clamp AK II Klick 30-50 A



Mid clamp AK II Klick 30-50 A

## Application:

Flat roof with foil, bitumen, gravel, concrete

## Orientation:

south

## Fastening:

S:FLEX Foot plate (optional)

## Roof pitch:

up to 5° (up to 10° upon request)

## Building height:

up to 25 m (up to 50 m upon request)

## Module type:

framed modules

## Module pitch:

10° / 15°

## Module field size:

max. 20 x 20 m

## Advantages:

- Installation without roof penetration possible
- Low area load: minimised ballast thanks to aerodynamic design
- Optimised load distribution through ground rails and foot plates
- Installation in the roof edge and corner regions is possible
- Lightning-current-carrying capacity according to DIN EN 62561 (VDE 185-561-1):2013-02



Assembly instructions



LEICHTmount RAIL 2.1 EW  
Ground rail



LEICHTmount RAIL 2.1  
Foot plate



LEICHTmount RAIL 2.1  
Base



LEICHTmount RAIL 2.1  
Tower



End clamp AK II Klick 30-50 A



Mid clamp AK II Klick 30-50 A

**Application:**

Flat roof with foil, bitumen, gravel, concrete

**Orientation:**

east-west

**Fastening:**

S:FLEX Foot plate (optional)

**Roof pitch:**

up to 5° (up to 10° upon request)

**Building height:**

up to 25 m (up to 50 m upon request)

**Module type:**

framed modules

**Module pitch:**

10° / 15°

**Module field size:**

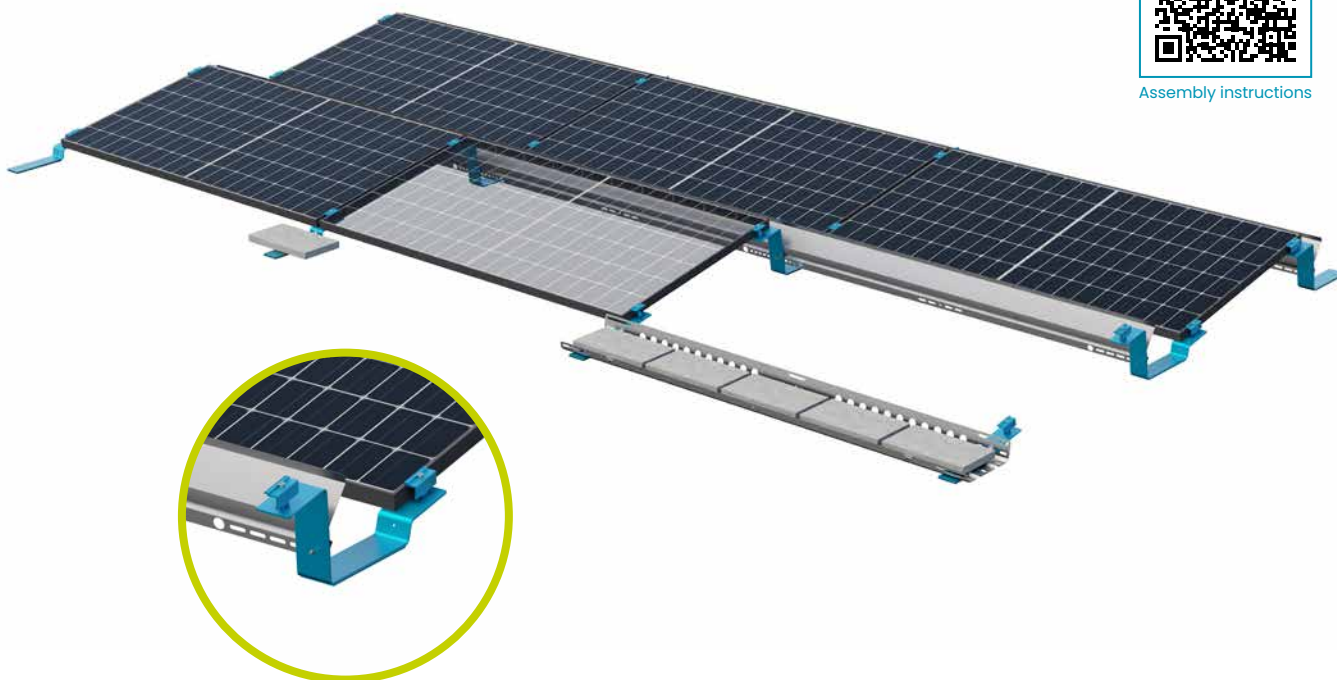
max. 20 x 20 m

**Advantages:**

- Installation without roof penetration possible
- Low area load: minimised ballast thanks to aerodynamic design
- Optimised load distribution through ground rails and foot plates
- Installation in the roof edge and corner regions is possible
- Lightning-current-carrying capacity according to DIN EN 62561 (VDE 185-561-1):2013-02



Assembly instructions



LEICHTmount CF  
Front part



LEICHTmount CF  
End part



LEICHTmount CF  
Connector



LEICHTmount  
Ballast tray 880



LEICHTmount  
Ballast tray 1800/2050/2300

## Application:

Flat roof with foil, bitumen, gravel, concrete

## Orientation:

south

## Roof pitch:

up to 5° without roof anchors, above with roof anchors

## Building height:

up to 25 m

## Module size (L x W):

1500 – 2250 mm x 950 – 1150 mm

## Module pitch:

5° / 10° / 15°

## Row spacing:

module pitch 5° = 18° shading angle

module pitch 10° & 15° = 18° or 25° shading angle

## Module field size:

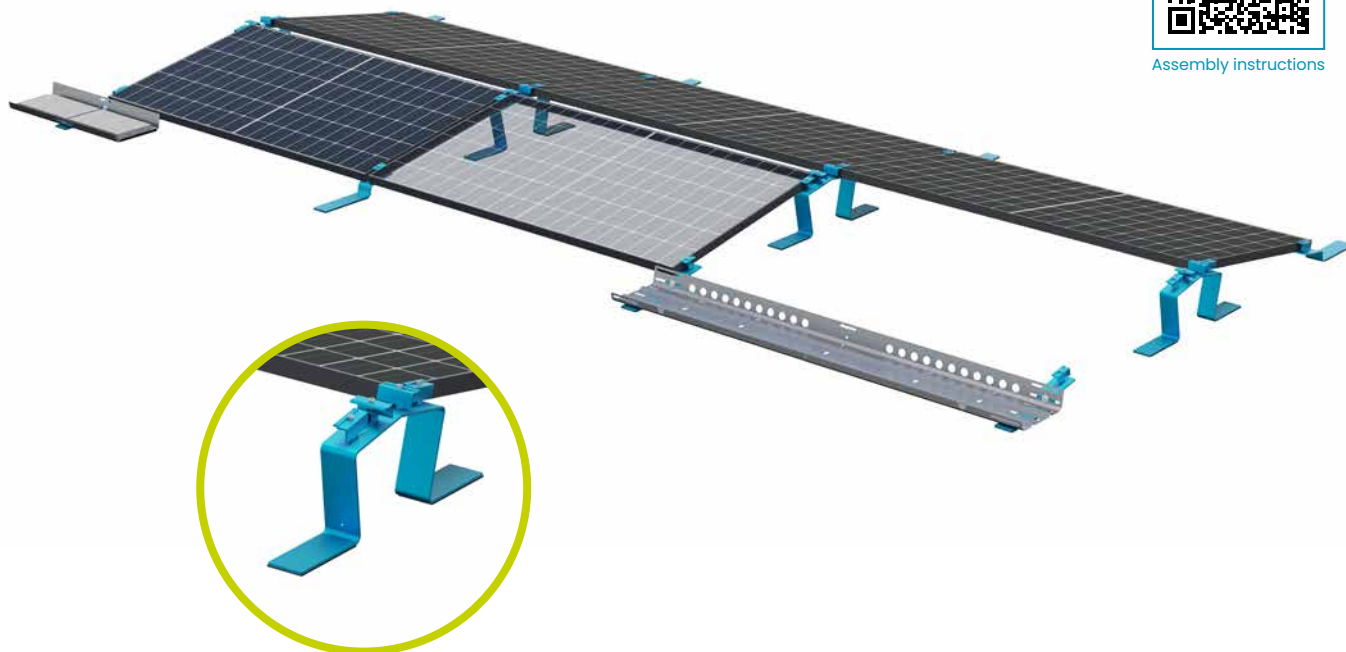
max. 20 m x 20 m

## Advantages:

- Short assembly times due to few components
- Low area load: minimised ballast thanks to aerodynamic design
- Non-penetrative roof connection possible
- Also suitable for roof edge zones
- Roof unevenness can be easily levelled out
- Problem-free water drainage, good module rear ventilation
- Certified to UL 2703, UL 1703 and IEC 61215



Assembly instructions



LEICHTmount CF  
Front part



LEICHTmount CF  
Top part



LEICHTmount CF  
Bottom part



LEICHTmount  
Ballast tray 880



LEICHTmount  
Ballast tray 1800/2050/2300

## Application:

Flat roof with foil, bitumen, gravel, concrete

## Orientation:

east-west

## Roof pitch:

up to 5° without roof anchors, above with roof anchors

## Building height:

up to 25m

## Module size (L x W):

1500 – 2250 mm x 950 – 1150 mm

## Module pitch:

10°

## Row spacing:

module pitch 10° = 18° shading angle

## Module field size:

max. 20 m x 20 m

## Advantages:

- Short assembly times due to few components
- Low area load: minimised ballast thanks to aerodynamic design
- Non-penetrative roof connection possible
- Also suitable for roof edge zones
- Roof unevenness can be easily levelled out
- Problem-free water drainage, good module rear ventilation
- Certified to UL 2703, UL 1703 and IEC 61215





Assembly instructions



**S:FLEX GreenLight ST**  
Universal profile



**S:FLEX GreenLight**  
Knickfix



**S:FLEX GreenLight**  
Base plate



**End clamp AK II Klick 30-50 A**



**Mid clamp AK II Klick 30-50 A**

**Application:**

Green roof (intensive and extensive), gravel roof

**Orientation:**

south and east-west

**Fastening:**

non-penetrative, additional ballast

**Roof pitch:**

up to 5°

**Module type:**

framed modules

**Module orientation:**

landscape / portrait

**Module pitch:**

10° / 15° / 20°

**Module field size:**

min. two modules

**Advantages:**

- No roof penetration
- High water storage volume
- Extremely fast installation
- Suitable for all common module sizes
- Integrated fall protection (optional)



Assembly instructions



**S:FLEX GreenLight ON TOP**  
Floor rail



**S:FLEX GreenLight ON TOP**  
Knickfix



**S:FLEX GreenLight ST**  
Universal profile



**End clamp AK II Klick 30-50 A**



**Mid clamp AK II Klick 30-50 A**

**Application:**

Existing green roof, gravel roof

**Orientation:**

south and east-west

**Fastening:**

non-penetrative, additional ballast

**Roof pitch:**

up to 5°

**Module type:**

framed modules

**Module orientation:**

landscape / portrait

**Module pitch:**

10° / 15° / 20°

**Module field size:**

min. two modules

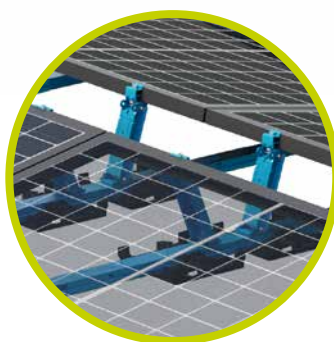
**Advantages:**

- No roof connection required, system is applied onto the existing green or gravel roof
- Suitable for all common module sizes
- Integrated fall protection (optional)





Assembly instructions  
edge clamping



Assembly instructions  
quarter-point clamping



LEICHTmount SNAP  
Ground rail



LEICHTmount SNAP  
Foot plate



LEICHTmount SNAP  
Tower Single / Double



LEICHTmount SNAP  
Base Single / Double

## Application:

Roofs with foil, bitumen, gravel or concrete

## Orientation:

east-west

## Fastening:

non-penetrative

(Roof connection according to flat roof guideline)

## Roof pitch:

up to 10°

## Module size (L x W):

1600 - 2500 mm x 990 - 1230 mm

Height: 30 - 40 mm

## Module pitch:

10°

## Module field size:

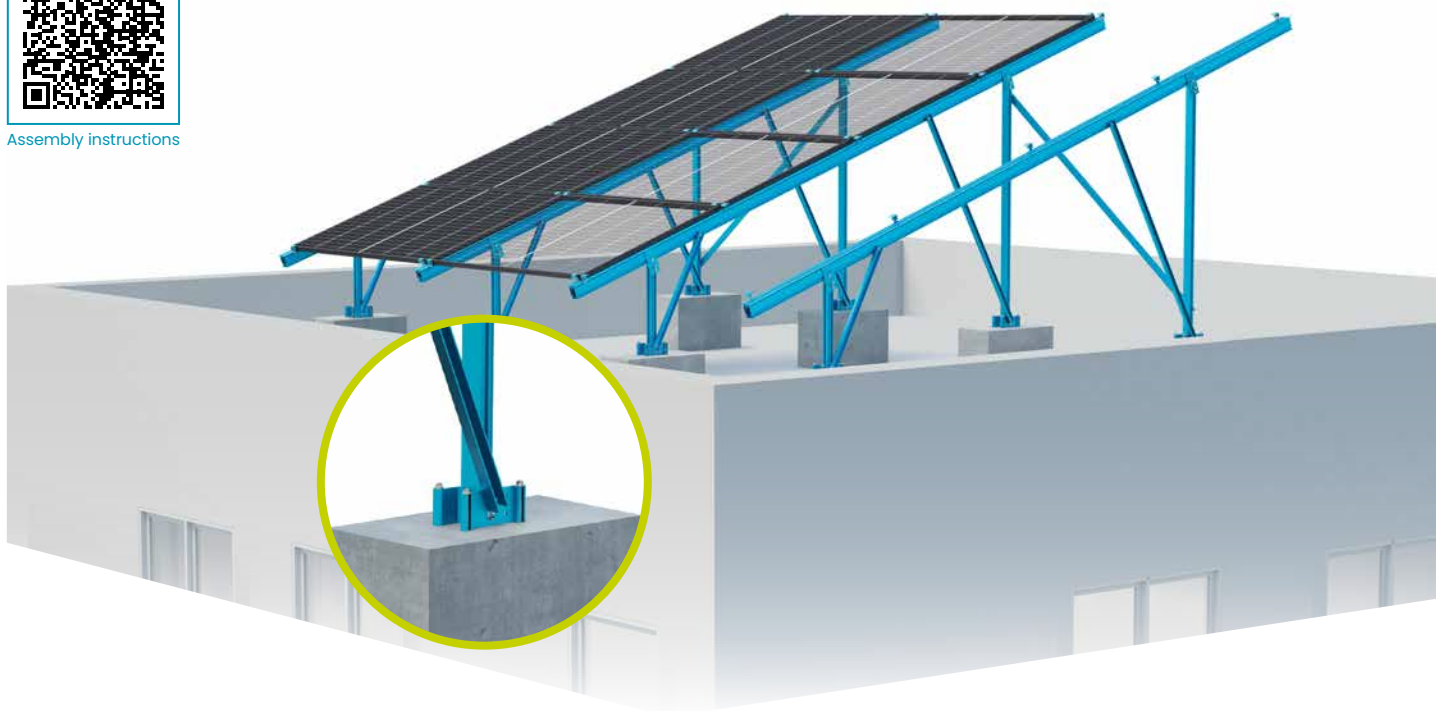
max. 30 x 30 m

## Advantages:

- System installation without roof penetration possible
- Reduced ballast due to systematic aerodynamic optimisation
- Optimised pressure load distribution due to wide support surface
- Installation in the roof edge and corner regions is possible
- Low system surface load: incl. modules / without ballast from 12.5 kg/m²



Assembly instructions



**Delta Concrete**  
Base rail



**Delta Concrete**  
Pillar FS 9/40



**Delta Concrete** Top



**Delta Concrete** Base

**Application:**

Flat roof

**Orientation:**

south and east-west

**Fastening:**

Concrete, screw fastening

**Module type:**

framed, frameless (additional horizontal rail),  
bifacial modules

**Module orientation:**

landscape / portrait

**Module pitch:**

up to 20°

**Module field size:**

12 x 4 modules (landscape) / 12 x 3 modules (portrait)

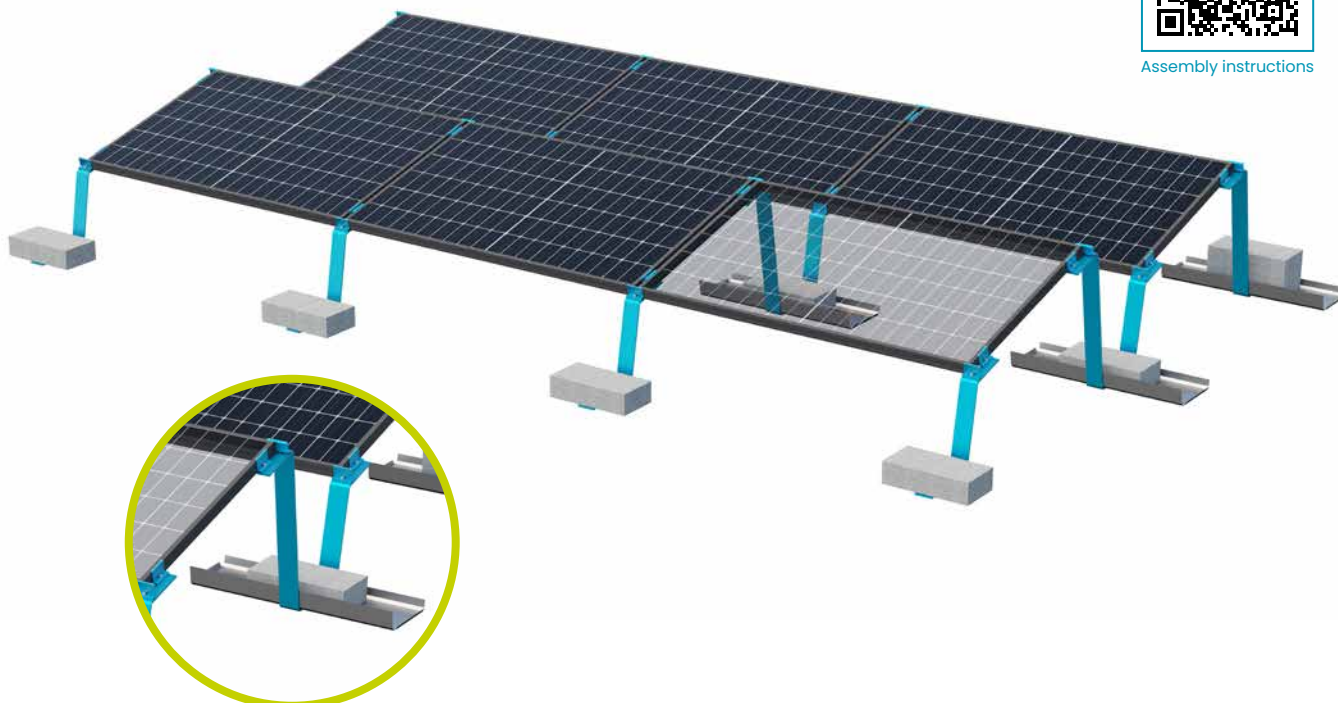
**Advantages:**

- Designed to be used on flat concrete roofs
- Excellent rear ventilation ensuring high yields, making it particularly suitable for hot regions
- Light-weight, material-saving design
- Offers the possibility to build over obstacles
- No drilling of aluminium on site





Assembly instructions



LEICHTmount G S  
Connector



LEICHTmount G S  
Front part



LEICHTmount G S  
End part



LEICHTmount  
Ballast tray 880

## Application:

Open ground

## Orientation:

south

## Ground inclination:

up to 20°

## Module type:

framed modules

## Module pitch:

15° / 20°

## Module field size:

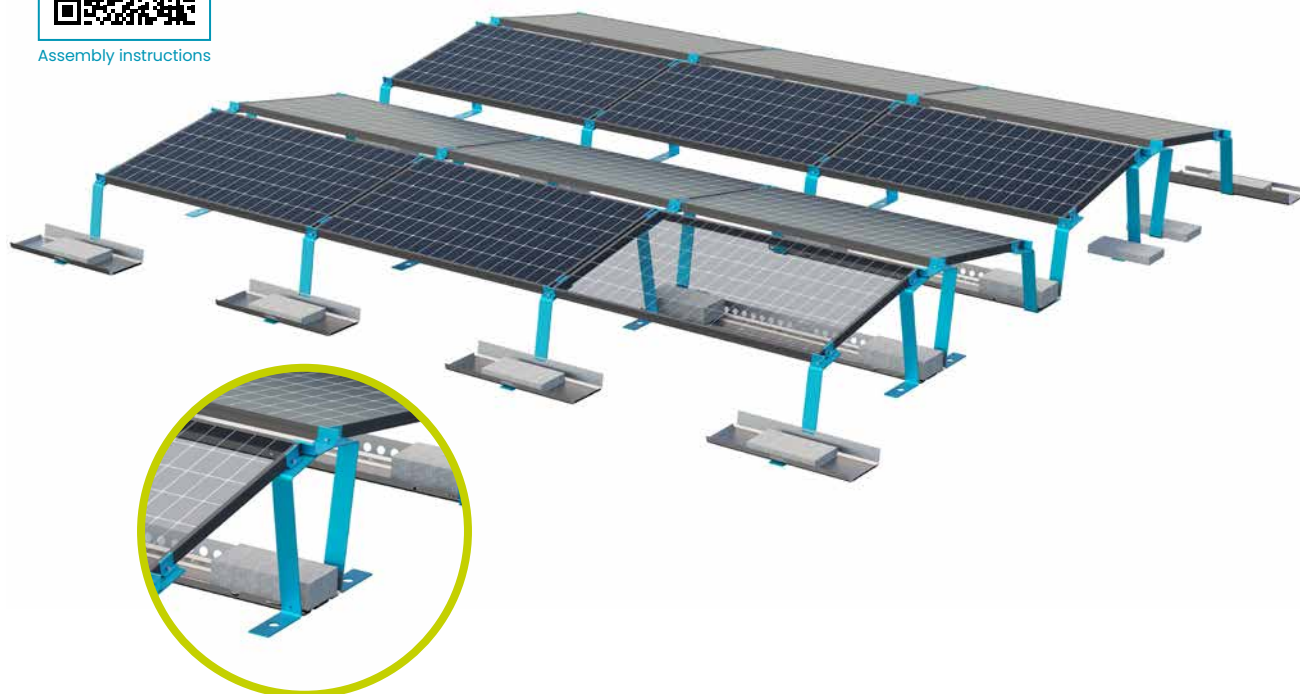
min. 2 x 3 modules

## Advantages:

- No pile driving or major excavation work needed
- Suitable for a wide range of surfaces such as earth, gravel, concrete
- Reduced transport and storage costs thanks to low volume packaging



Assembly instructions



LEICHTmount G EW  
Top part



LEICHTmount G EW  
Front part



LEICHTmount  
Ballast tray 880



LEICHTmount  
Ballast tray 1880

**Application:**

Open ground

**Orientation:**

east-west

**Ground inclination:**

up to 20°

**Module type:**

framed modules

**Module pitch:**

10°

**Module field size:**

min. 2 x 4 modules

**Advantages:**

- No pile driving or major excavation work needed
- Suitable for a wide range of surfaces such as earth, gravel, concrete
- Reduced transport and storage costs thanks to low volume packaging



Assembly instructions



**Delta Concrete**  
Base rail



**Delta Concrete**  
Pillar FS 9/40



**Delta Concrete** Top



**Delta Concrete** Base

**Application:**

Open grounds with concrete foundation, on-site

**Orientation:**

south and east-west

**Fastening:**

Concrete, screw fastening

**Ground inclination:**

N-S: any; E-W: module area 1° / terrain 10°

**Module type:**

framed, frameless (additional horizontal rail),  
bifacial modules

**Module orientation**

landscape / portrait

**Module pitch:**

up to 20°

**Module field size:**

12 x 4 modules (landscape) / 12 x 3 modules (portrait)

**Advantages:**

- Designed for ground-mount on concrete foundations
- Light-weight, material-saving design
- Offers the possibility to build over obstacles
- No drilling of aluminium on site



Assembly instructions



**S:FLEX Carport Single**



**S:FLEX Carport Double**

**Parking lots:**

1 or 2 parking spaces, expendable up to 12 freely combinable single /double segments for a maximum of 24 parking spaces

**Fastening:**

anchored in the ground / concrete

**Roof pitch:**

6°

**Height:**

headroom: 2.09 m / max. height: 2.95 m

**Module orientation**

landscape / portrait

**Module field size:**

Single: 22 m<sup>2</sup> / 10 modules

Double: 35 m<sup>2</sup> / 15 modules

**Material:**

Carport: hot-dip galvanized steel, powder coated

Sheet metal: continuous, 0.75 mm thick

Solar fastening: aluminium

**Colour:**

Matt black (RAL 9005), anthracite trapezoidal sheet





### Grounding clamp DEHN Uni

- To integrate the mounting system into the building's equipotential bonding system and to connect it to earth
- Stainless steel to prevent contact corrosion
- Connection by means of hammerhead bolt and locking nut (positive and frictional locking)
- Diameter of clamping area for aluminium round wire: 8 - 10 mm / Connection cross-section of equipotential bonding conductor: 4 - 50 mm<sup>2</sup>



### OBO equipotential bonding clamp

- For equipotential bonding of the mounting rails by means of aluminium round wire
- Connection by means of hammerhead bolt and locking nut (positive and frictional locking)
- Diameter of clamping area for aluminium round wire: 8 - 10 mm



### Splice 5 / 7 / 13 Grounding

- Equipotential bonding between the rails by means of a corresponding connector with stainless steel grounding blades

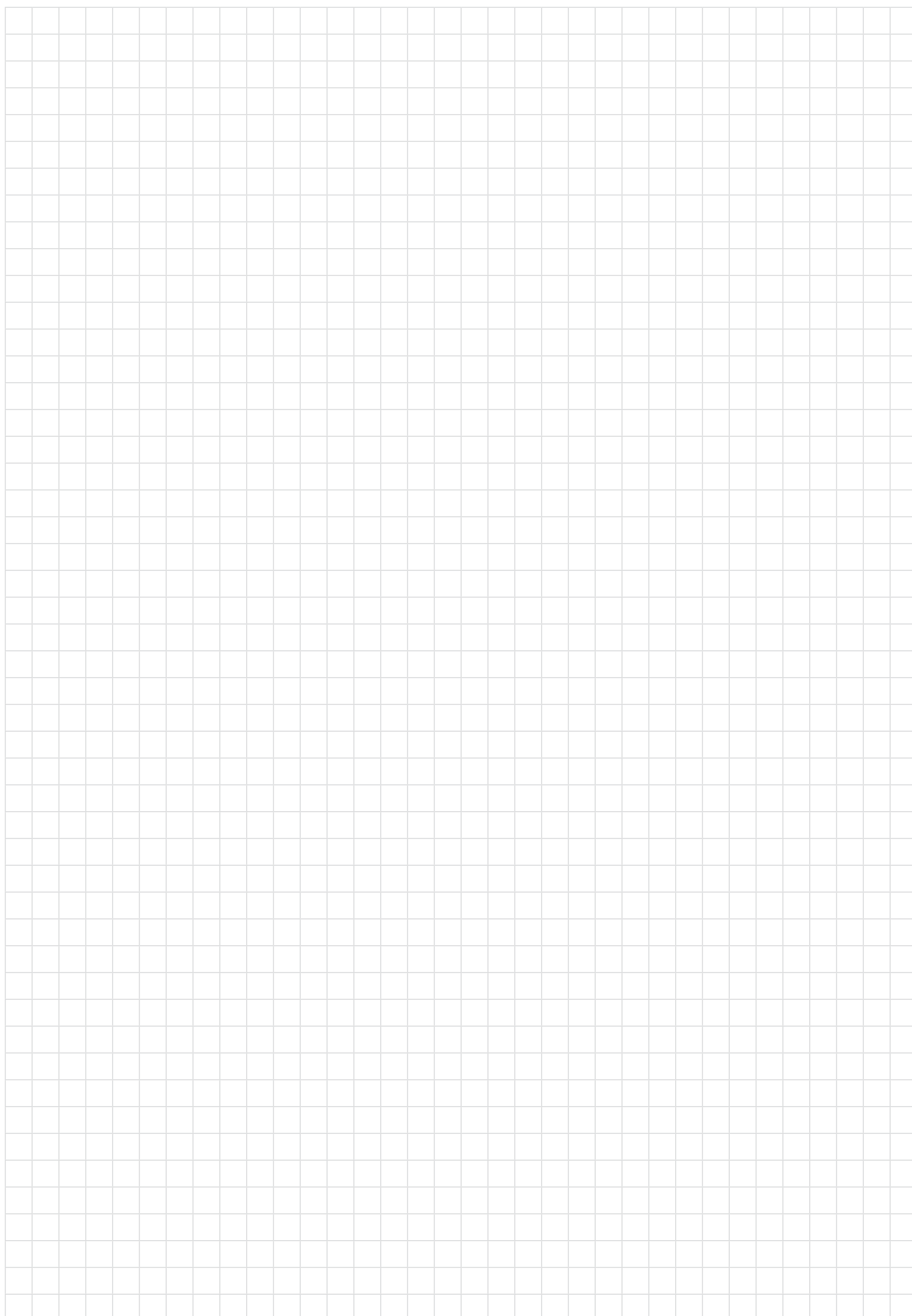


### Grounding kit MH AK Klick 30-50mm /

### Grounding kit EH AK Klick 30-50mm /

### Grounding kit 4x2

- For integration of the module frames into the equipotential bonding system
- Equipotential bonding between the module frame and substructure
- Breaks through the anodised layer
- Stainless steel
- For pre-assembly and installation on site





Sustainable energy – securely anchored.



[www.sflex.com](http://www.sflex.com)

© S:FLEX GmbH • 30-999-034 • Stand: 05/2025

## Freiburg

**S:FLEX GmbH**

Elsässer Straße 12  
79189 Bad Krozingen  
Germany

Phone +49 761 888 56 08 0  
[info@sflex.com](mailto:info@sflex.com)

## Berlin

**S:FLEX GmbH**

Maulbeerstraße 13b  
15834 Rangsdorf  
Germany

Phone +49 33708 35 53 0  
[info@sflex.com](mailto:info@sflex.com)

