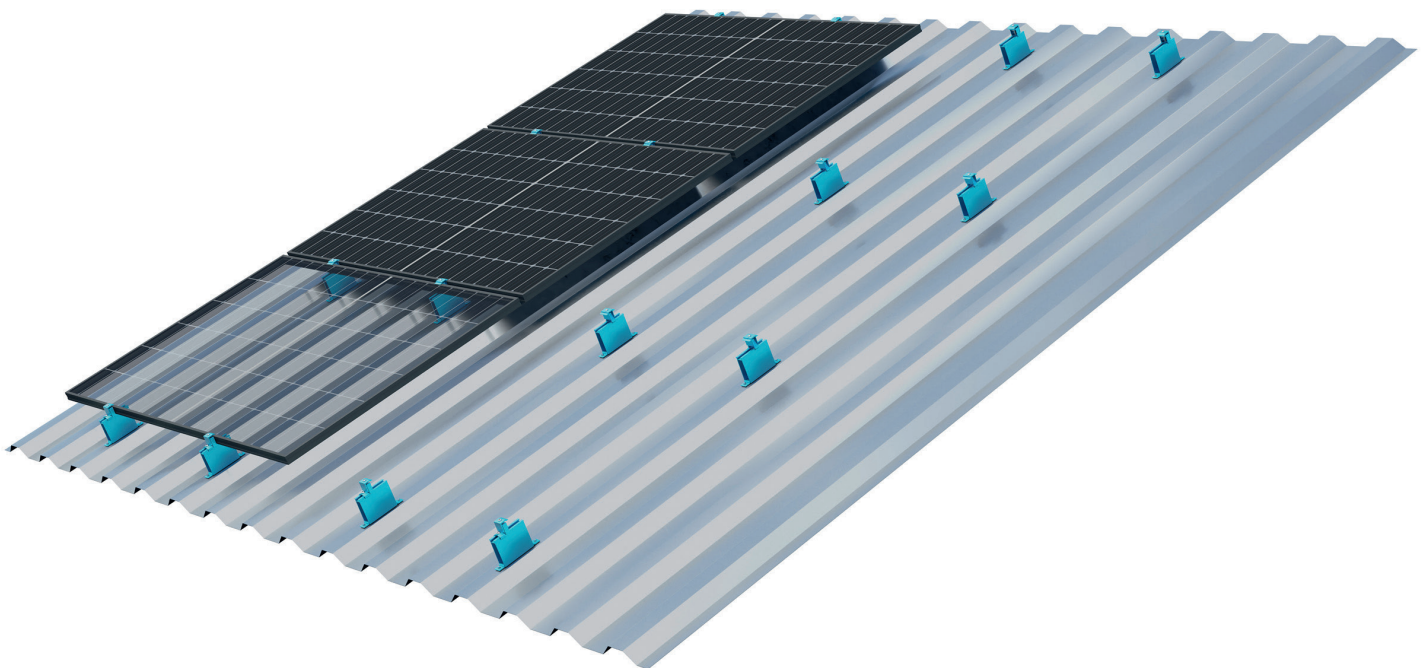




## HIGH-BEAD RAIL HK 125 XL 50/100

Mounting rail for trapezoidal sheet metal roofs



### Do not give away space and optimise yields

When installing with the Hawk high-bead rail HK 125 XL 50/100, no additional expansion joints are required on the roof and maximum use is made of the available surface area. This is because the rail compensates for the thermally induced length compensation due to its floating assembly. And it also maximises yields. With its height of 50 or 100 millimetres, the rail provides significantly better module rear ventilation.

The greater distance to the roof surface not only facilitates cable routing and fastening, but also simplifies the installation of systems with micro-inverters and power optimisers.

### Save material and logistics costs

All S:FLEX fastening systems for trapezoidal sheet metal roofs combine a reliable roof connection with significantly reduced material usage. This enables you to achieve higher margins for your projects.

### Quick and easy installation

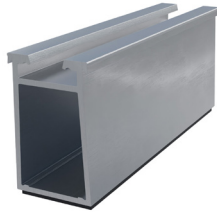
The HK 125 XL 50/100 complete high-bead rail has a handy length of 125 mm. It is supplied with a mounting bracket pre-drilled with 2 holes as standard and comes pre-assembled with EPDM sealing tape.

# HIGH-BEAD RAIL HK 125 XL 50/100

Mounting rail for trapezoidal sheet metal roofs

## Technical Data

High-bead rail  
HK 125 XL 50



High-bead rail  
HK 125 XL 100



HS bracket  
XL 130 5.0/6.5



End clamp  
AK II Klick 30-50 A



Mid clamp  
AK II Klick 30-50 A  
Grounding kit



Slider lock  
AK A



<b>Application</b>	Trapezoidal sheet metal
<b>Module type</b>	Framed modules
<b>Module orientation</b>	Portrait/landscape
<b>Distance between modules and roof</b>	50 mm/ 100 mm
<b>Module field length</b>	20 m max.
<b>Roof pitch</b>	20°
<b>Max. load</b>	Wind load up to 2.4 kN/m <sup>2</sup> Snow load up to 2.4 kN/m <sup>2</sup>
<b>Fastening</b>	Sheet metal screws
<b>Seam spacings</b>	Variable
<b>Earthing of modules</b>	Module clamps with grounding kit
<b>Sheet metal thickness</b>	Sheet steel min. 0.5 mm Aluminium min. 0.5 mm
<b>Material</b>	Aluminium EN AW 6063 / T6, Stainless steel, EPDM seals
<b>Colour</b>	Natural, extruded finish

