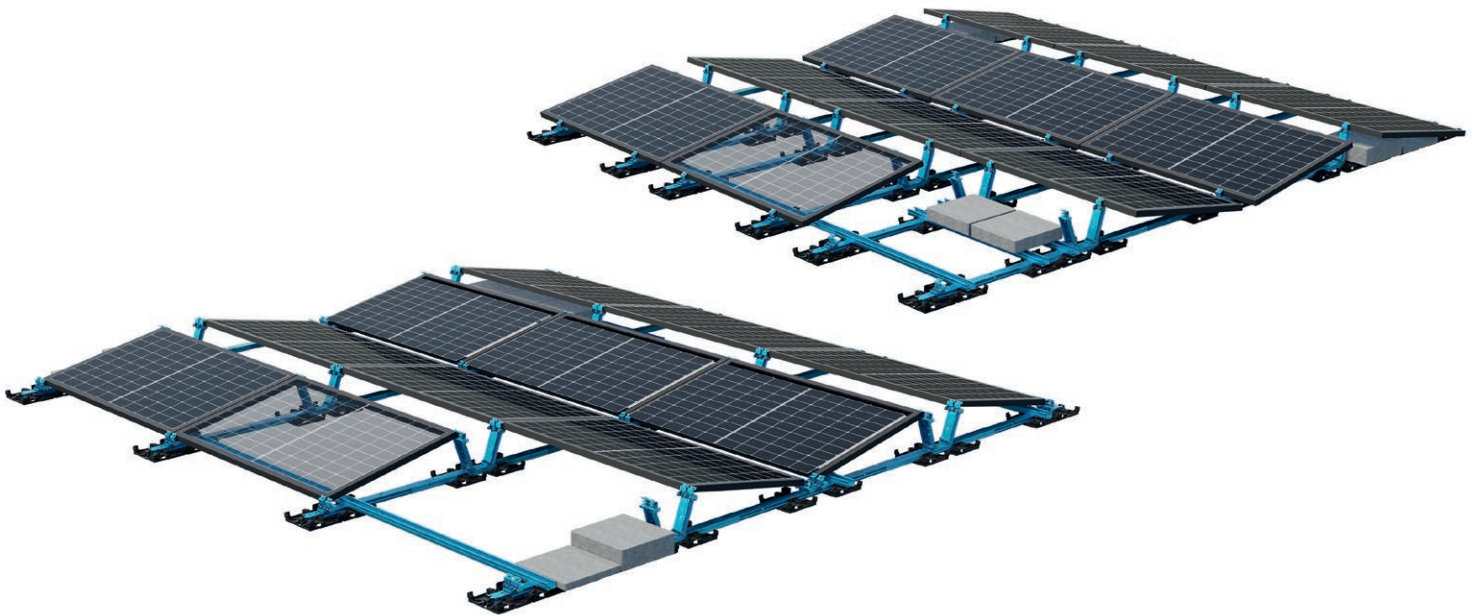




## LEICHTmount SNAP

Aerodynamic east/west flat roof system for edge and quarter point clamping



### The S:FLEX solution for high loads and large modules on flat roofs

Even when installed without penetrating the roof, the LEICHTmount SNAP is as windproof as all S:FLEX fastening systems that are part of the LEICHTmount range. Its special feature is its outstanding stability, which makes it suitable for high loads and the latest high-performance PV modules with large dimensions. In particular, extensive projects can be implemented even faster and more efficiently.

In addition to its high load-bearing capacity, the S:FLEX LEICHTmount SNAP is quite compelling due to its particularly convenient and safe installation, in which the supports are pushed and clicked into the floor rails and only one tool is needed. The modules can be inserted vertically and then swiveled very easily.

Modules for which edge clamping is not permitted, can alternatively be clamped at quarter-point.

### An overview of the advantages:

- Extremely stable and safe flat roof system
- Modules can be fixed with clamping at the edges as well as at quarter-point
- Particularly easy module installation and removal
- System installation without roof penetration possible
- Reduced ballast due to systematic aerodynamic optimisation
- Foot plates attached with a click to the ground rails to protect the roof skin from plasticizer migration
- Optimised pressure load distribution due to wide support surface
- Large module fields up to 30 x 30 m possible
- Optimal use of the roof area due to easy planning and avoiding of interfering elements
- Integrated into the S:FLEX planning tool

# LEICHTmount SNAP

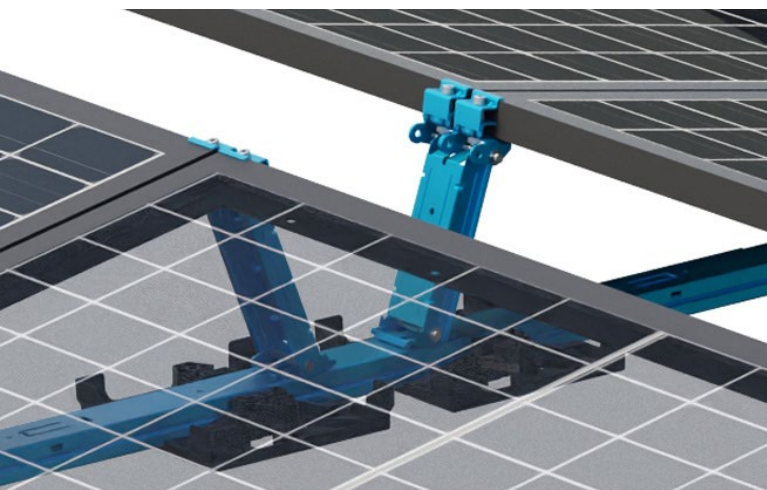
Aerodynamic flat-roof system

## Technical Data



<b>Application</b>	Flat roof with foil, bitumen, gravel, green roof, concrete, open spaces
<b>Module orientation</b>	East–West
<b>Inclination</b>	10°
<b>Module size (LxW)</b>	1600 - 2500 mm x 990 - 1230 mm Height: 30 - 40 mm
<b>Fastening</b>	Non-penetrative installation possible
<b>System surface load</b>	Incl. modules/without ballast from 12.5 kg/m <sup>2</sup>
<b>Roof inclination</b>	Up to 10°
<b>Edge clearance</b>	Installation in the roof edge and corner regions is possible
<b>System size</b>	Up to 30x30 m
<b>Materials</b>	Sheet steel S350GD / S550GD, Coating ZM310 Plastic plates: PE-HD recycled material
<b>Manufacturing</b>	Made in EU/Germany

Mounting with edge clamping of the modules



Mounting with quarter-point clamping of the modules

