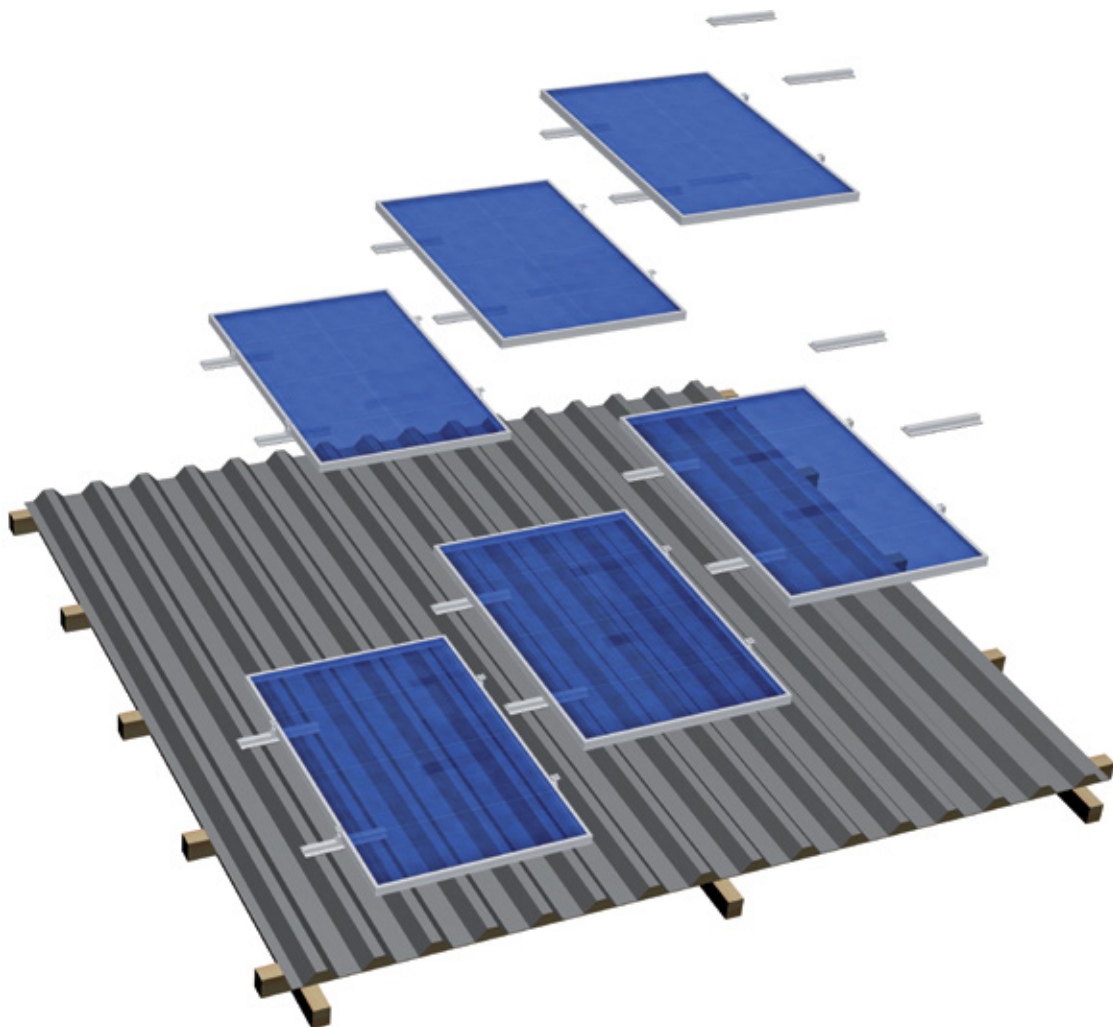




## **MOUNTING SYSTEMS FOR TRAPEZOIDAL SHEET AND CORRUGATED SHEET ROOFS**

for framed and frameless modules

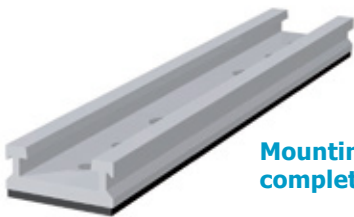
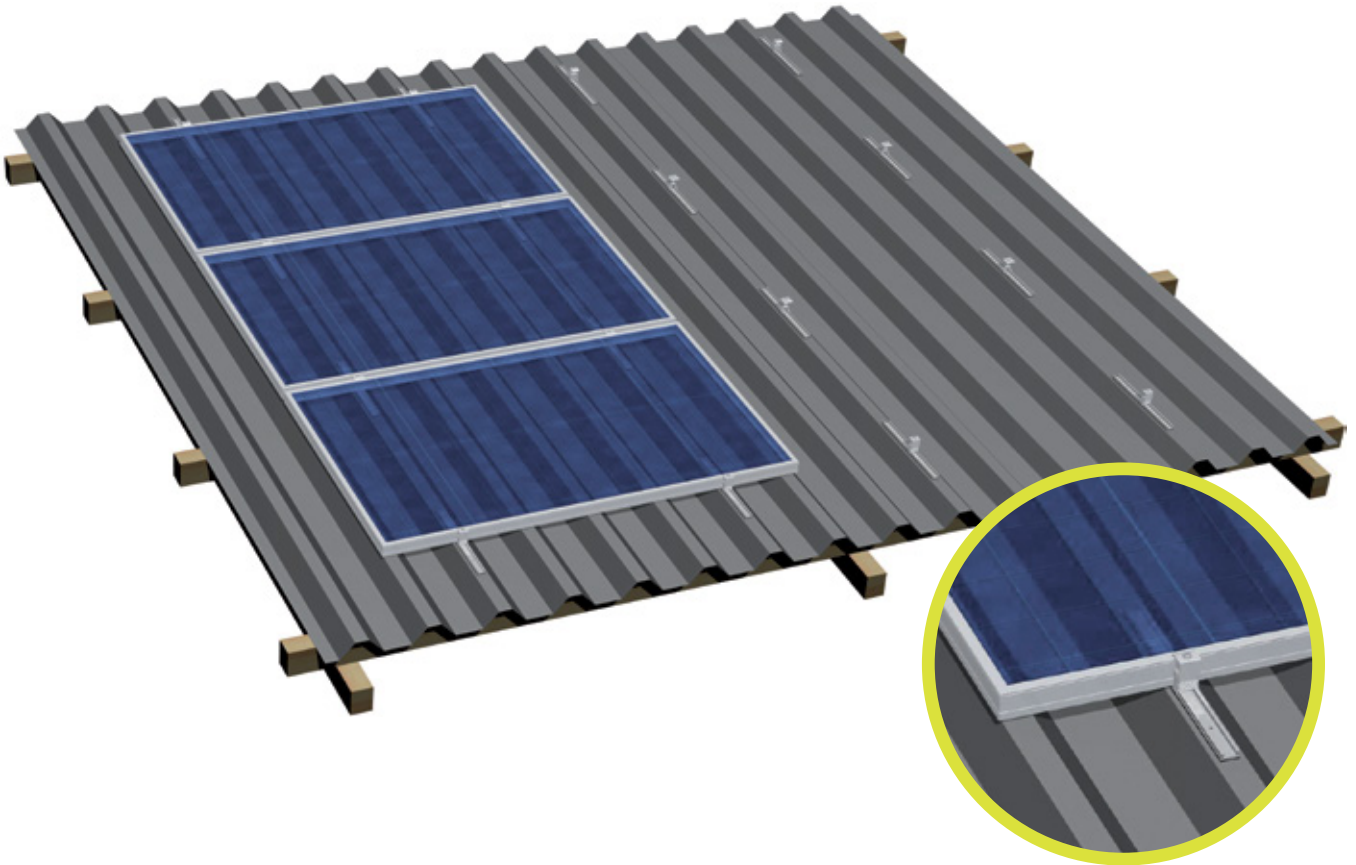


S:FLEX mounting systems for trapezoidal and corrugated sheet metal roofs combine fast and secure fitting with substantially lower materials usage. As a result, you will significantly optimize the margins of your projects.

Our three solidly engineered systems – longitudinal sheet metal rails, transverse sheet metal rails, and brackets for attachment to the sheet metal – provide a solution for almost every roof. Our project engineers and structural engineers also provide custom solutions for exposed locations or steep roofs. Just ask us!

## MOUNTING SYSTEMS FOR TRAPEZOIDAL SHEET AND CORRUGATED SHEET ROOFS

### Mounting using longitudinal sheet metal rails



Mounting rail ST-AK 1/12 complete l=180

End clamp EH AK II Klick 30-50



Mid-clamp MH AK II Klick 30-50

#### Application:

Trapezoidal sheet metal

#### Fastening:

Riveted or screwed onto raised corrugations

#### Module type:

Framed modules

#### Module orientation:

Horizontal

#### Layers of rails:

Single layer

#### Advantages:

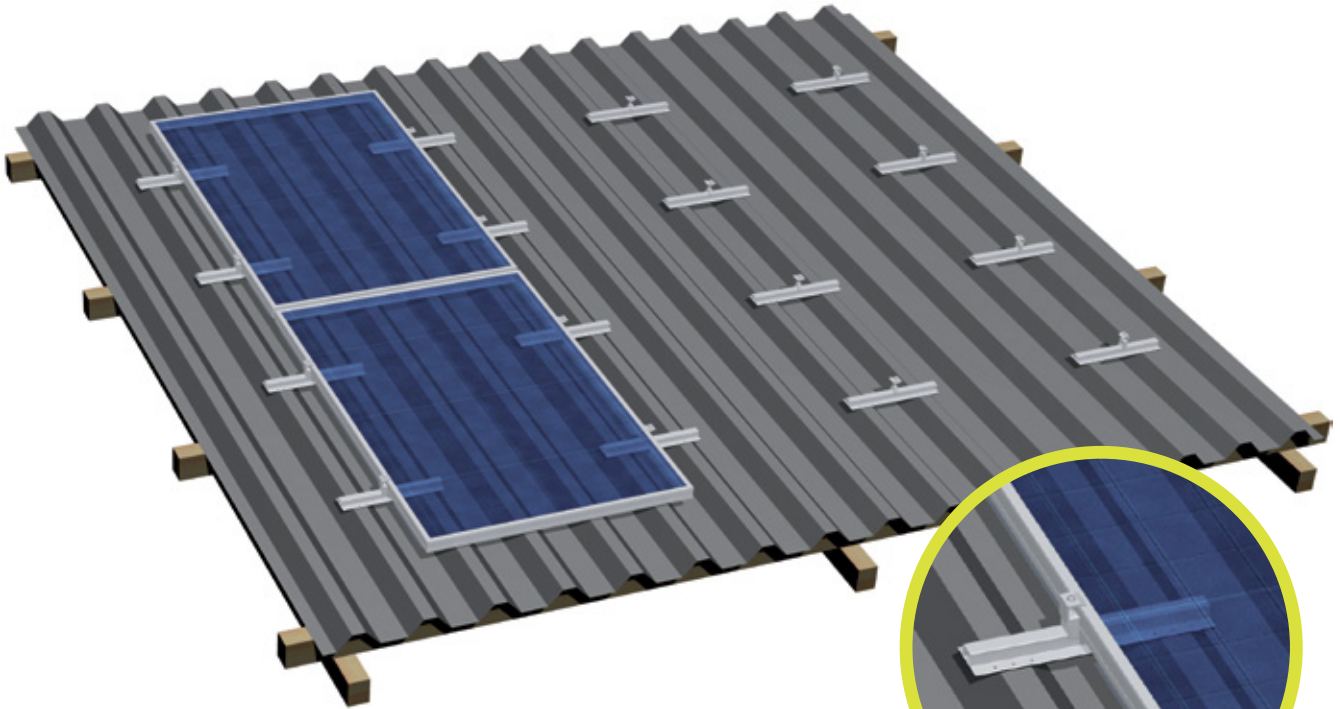
- Low material / fitting costs
- Rail lengths of 180 mm, 3150 mm and 6200 mm
- Rail segments 180 mm (ST-AK 1/12 complete / l=180 mm) are supplied prefabricated with 3 x 2 holes (5 mm / 6.5 mm / 8.5 mm) and sealing tape covered bottom side

#### Note:

Respective clearances between raised corrugations required for optimum module fastening must be adhered to

## MOUNTING SYSTEMS FOR TRAPEZOIDAL SHEET AND CORRUGATED SHEET ROOFS

Mounting using transverse sheet metal rails



**Trapezoidal sheet metal rail**  
AK complete I=395 / 24



**End clamp EH AK II Klick 30-50**



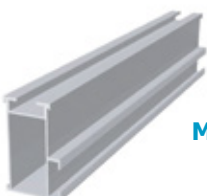
**Mid-clamp MH AK II Klick 30-50**



**Cross adapter clamp AK**



**Mounting rail ST-AK 13/60**



### **Application:**

Trapezoidal and corrugated sheet metal

### **Fastening:**

Riveted or screwed onto raised corrugations

### **Module type:**

Framed and frameless modules

### **Module orientation:**

Landscape / portrait

### **Layers of rails:**

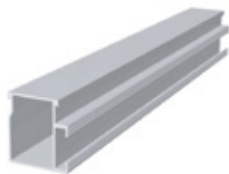
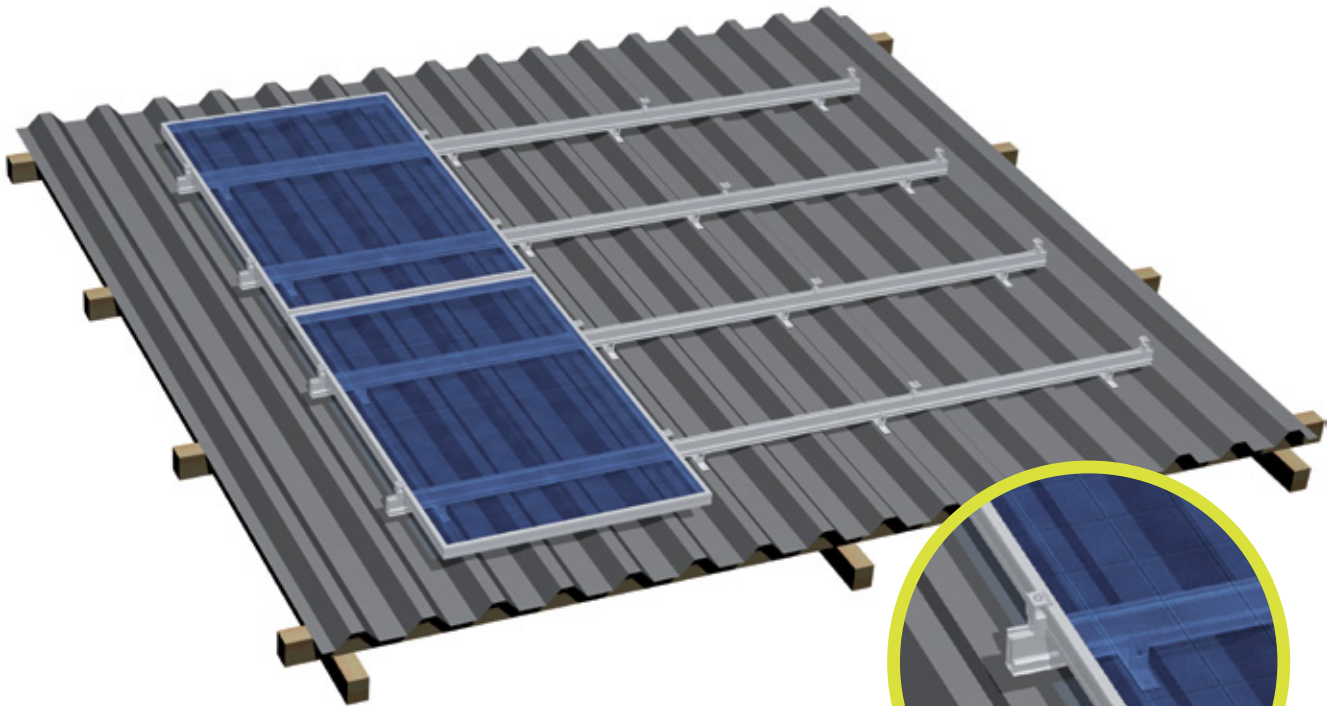
Single / double layer, cross rail installation

### **Advantages:**

- Low material / fitting costs
- Rail lengths of 395 mm, 3150 mm and 6200 mm
- High rigidity rails suitable for heavier loads
- Rail segments 395 mm (Trapezoidal sheet metal AK complete / I=395 mm) are supplied prefabricated with 24 holes and sealing tape covered bottom side

## MOUNTING SYSTEMS FOR TRAPEZOIDAL SHEET AND CORRUGATED SHEET ROOFS

Mounting on sheet metal using brackets



Mounting rail ST-AK 5/40

Bracket for sheet metal  
installation complete



Cross adapter clamp AK

Mounting rail ST-AK 13/60



Mid-clamp MH AK II Klick 30-50

End clamp EH AK II Klick 30-50



### Application:

Trapezoidal and corrugated sheet metal

### Fastening:

Riveted or screwed onto raised corrugations

### Module type:

Framed and frameless modules

### Module orientation:

Landscape / portrait

### Layers of rails:

Single / double layer, cross rail installation

### Advantages:

- Low fitting costs
- Height adjustable via elongated hole in the sheet metal bracket



## MOUNTING SYSTEMS FOR TRAPEZOIDAL SHEET AND CORRUGATED SHEET ROOFS

### for framed and frameless modules

#### Flexible applications:

Carrier rails of the S:FLEX system for trapezoidal sheet and corrugated sheet roofs are available in lengths of 180 mm, 395 mm, 3150 mm and 6200 mm. Depending on the project, you can choose between the short rails, which are easy to handle, transport and store, and the long rails which are fast to fit.

#### Simple, customized planning:

Our planning tool lets you create an exact, specific plan for each installation site. Wind and snow loads applicable to the existing roofing are always taken into account as well.

#### Safety for the roof:

Installation of thermal expansion joints prevents tension damage to the roof and modules.

#### Fast fitting:

Riveted fastening allows you to easily install modules on the roof in a very short time using the prefabricated components. Alternatively, chip-free thin sheet metal screws can also be used.

Use our adjustable height brackets to obtain a level module array on uneven roofs.

Modules can be fitted vertically or horizontally.

Elevated installation is also possible.

We are happy to provide you with advice on this.

<b>Module types</b>	Framed solar modules with frame thickness 30–51 mm, and unframed modules (other types on request)
<b>Applications</b>	Trapezoidal sheet metal roofs Corrugated sheet metal roofs Curved and barrel-shaped roofs Flat roofs and low pitch roofs (others on request)
<b>Sheet metal thickness</b>	Standard steel starting at 0.5 mm Standard aluminium starting at 1.0 mm (others on request)
<b>Module orientation</b>	Vertical and horizontal
<b>Installation type</b>	Parallel to the roof
<b>Material</b>	High grade aluminium Stainless steel EPDM seals
<b>Sealing rivets, sealing inserts</b>	UV resistant, waterproof and thermally stable
<b>Colour</b>	Natural extruded finish Also available in black
<b>Special features</b>	Especially fast fitting is possible due to the optional riveted fastening

---

---

**HEADQUARTERS S:FLEX GmbH** Germany Reinbeker Weg 9 21029 Hamburg  
Phone +49 (0)40 18 15 46 13 Fax +49(0)40 18 15 46 14

**S:FLEX GmbH** Germany Sasbacher Straße 7 79111 Freiburg  
Phone +49 (0)761 888 56 08 0 Fax +49 (0)0761 888 56 08 39

**S:FLEX GmbH** Spain Estructuras FV Ventas España Barcelona  
Phone +34 627 432 559

**S:FLEX ReSys AlterEco Sarl** France 16 Grand'Rue 67420 Saâles  
Phone +33 388 97 17 07 Fax +33 966 803 523

**S:FLEX Inc.** USA 756 S. Jason St. – Unit 17 Denver, CO 80223  
Phone +1 303 522 3974 Fax +1 720 292 1858 [inquiry@sflex.com](mailto:inquiry@sflex.com)

[www.sflex.com](http://www.sflex.com) [info@sflex.com](mailto:info@sflex.com)